

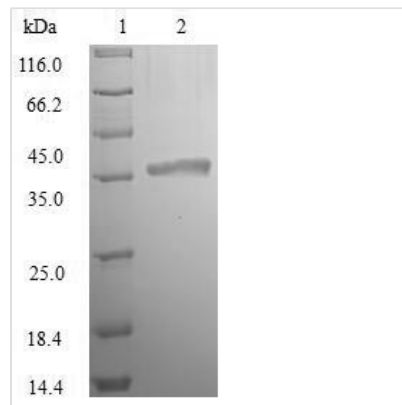


# Recombinant Escherichia coli Murein tetrapeptide carboxypeptidase (IdcA)

<b>Product Code</b>	CSB-EP303469ENV
<b>Relevance</b>	Releases the terminal D-alanine residue from the Cytoplasmic domain tetrapeptide recycling product L-Ala-gamma-D-Glu-meso-Dap-D-Ala. To a lesser extent, can also cleave D-Ala from murein derivatives containing the tetrapeptide, i.e. MurNAc-tetrapeptide, UDP-MurNAc-tetrapeptide, GlcNAc-MurNAc-tetrapeptide, and GlcNAc-anhMurNAc-tetrapeptide. Does not act on murein sacculi or cross-linked mucopeptides. The tripeptides produced by the LcdA reaction can then be reused as peptidoglycan building blocks; LcdA is thereby involved in murein recycling. Is also essential for viability during stationary phase.
<b>Abbreviation</b>	Recombinant E.coli IdcA protein
<b>Storage</b>	The shelf life is related to many factors, storage state, buffer ingredients, storage temperature and the stability of the protein itself. Generally, the shelf life of liquid form is 6 months at -20°C/-80°C. The shelf life of lyophilized form is 12 months at -20°C/-80°C.
<b>Uniprot No.</b>	P76008
<b>Alias</b>	LD-carboxypeptidase AMuramoyltetrapeptide carboxypeptidase
<b>Product Type</b>	Recombinant Protein
<b>Immunogen Species</b>	Escherichia coli (strain K12)
<b>Purity</b>	≥ 90% as determined by SDS-PAGE.
<b>Sequence</b>	MSLFHLIAPSGYCIKQHAALRGIQRLTDAGHQVNNVEVIARRCERFAGTETERL EDLNSLARLTTPNTIVLAVRGGYGASRLLADIDWQALVARQQHDPLLCGHSDF TAIQCGLLAHGNVITFSGPMLVANFGADELNAFTEHHFWLALRNETFTIEWQG EGPTCRAEGLTWGGNLAMLISLIGTPWMPKIENGILVLEDINEHPFRVERMLLQ LYHAGILPRQKAILGFSFGSTPNDDYDAGYNLESVYAFLRSRLSIPLITGLDFGHE QRTVTLP LGAHAILNNTREGTQLTISGHPVLKM
<b>Research Area</b>	Others
<b>Source</b>	E.coli
<b>Target Names</b>	IdcA
<b>Expression Region</b>	1-304aa
<b>Notes</b>	Repeated freezing and thawing is not recommended. Store working aliquots at 4°C for up to one week.
<b>Tag Info</b>	N-terminal 6xHis-tagged
<b>Mol. Weight</b>	37.6kDa
<b>Protein Length</b>	Full Length



## Image



(Tris-Glycine gel) Discontinuous SDS-PAGE (reduced) with 5% enrichment gel and 15% separation gel.

## Reconstitution

We recommend that this vial be briefly centrifuged prior to opening to bring the contents to the bottom. Please reconstitute protein in deionized sterile water to a concentration of 0.1-1.0 mg/mL. We recommend to add 5-50% of glycerol (final concentration) and aliquot for long-term storage at -20°C/-80°C. Our default final concentration of glycerol is 50%. Customers could use it as reference.

## Shelf Life

The shelf life is related to many factors, storage state, buffer ingredients, storage temperature and the stability of the protein itself. Generally, the shelf life of liquid form is 6 months at -20°C/-80°C. The shelf life of lyophilized form is 12 months at -20°C/-80°C.