



Recombinant Human Scavenger receptor class B member 1 (SCARB1), partial

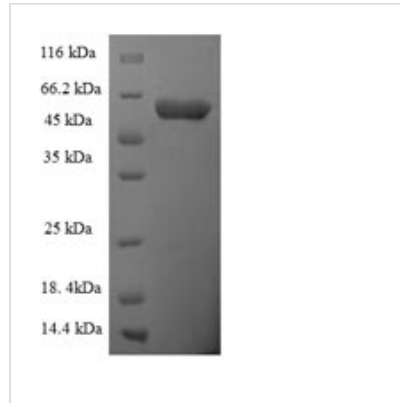
Product Code	CSB-EP845139HU
Relevance	Receptor for different ligands such as phospholipids, cholesterol ester, lipoproteins, phosphatidylserine and apoptotic cells. Probable receptor for HDL, located in particular region of the plasma mbrane, called caveolae. Facilitates the flux of free and esterified cholesterol between the cell surface and Extracellular domain donors and acceptors, such as HDL and to a lesser extent, apoB-containing lipoproteins and modified lipoproteins. Probably involved in the phagocytosis of apoptotic cells, via its phosphatidylserine binding activity. Receptor for hepatitis C virus glycoprotein E2. Binding between SCARB1 and E2 was found to be independent of the genotype of the viral isolate. Plays an important role in the uptake of HDL cholesteryl ester .
Abbreviation	Recombinant Human SCARB1 protein, partial
Storage	The shelf life is related to many factors, storage state, buffer ingredients, storage temperature and the stability of the protein itself. Generally, the shelf life of liquid form is 6 months at -20°C/-80°C. The shelf life of lyophilized form is 12 months at -20°C/-80°C.
Uniprot No.	Q8WTV0
Alias	CD36 and LIMPII analogous 1 ;CLA-1CD36 antigen-like 1Collagen type I receptor, thrombospondin receptor-like 1SR-BI; CD36
Product Type	Recombinant Protein
Immunogen Species	Homo sapiens (Human)
Purity	≥ 90% as determined by SDS-PAGE.
Sequence	PSLIKQQVLKNVRIDPSSLSFNMWKEIPIPFYLSVYFFDVMNPSEILKGEKPQVR ERGPYVYREFRHKSNITFNNNDTVSFLEYRTFQFQPSKSHGSESDYIVMPNILV LGAAVMMENKPMTLKLIMTLAFTTLGERAFMNRTVGEIMWGYKDPLVNLINKY FPGMFPFKDKFGLFAELNNSDGLFTVFTGVQNISRIHLVDKWNGLSKVDFWH SDQCNMINGTSGQMWPFFMTPESSLEFYSPACRSMKLMYKESGVFEGIPTY RFVAPKTLFANGSIYPPNEGFCPCLESGIQNVSTCRFSAPLFLSHPHFLNADPV LAEAVTGLHPNQEASHLFLDIHPVTGIPMNCVSVKLQLSLYMKSVAGIGQTGKIE PVVLP LLWFAESGAMEGETLHTFYTQLV LMPKVMHY
Research Area	Cancer
Source	E.coli
Target Names	SCARB1
Expression Region	33-443aa
Notes	Repeated freezing and thawing is not recommended. Store working aliquots at 4°C for up to one week.
Tag Info	N-terminal 6xHis-SUMO-tagged



Mol. Weight 62.7kDa

Protein Length Extracellular Domain

Image



(Tris-Glycine gel) Discontinuous SDS-PAGE (reduced) with 5% enrichment gel and 15% separation gel.

Reconstitution

We recommend that this vial be briefly centrifuged prior to opening to bring the contents to the bottom. Please reconstitute protein in deionized sterile water to a concentration of 0.1-1.0 mg/mL. We recommend to add 5-50% of glycerol (final concentration) and aliquot for long-term storage at -20°C/-80°C. Our default final concentration of glycerol is 50%. Customers could use it as reference.

Shelf Life

The shelf life is related to many factors, storage state, buffer ingredients, storage temperature and the stability of the protein itself. Generally, the shelf life of liquid form is 6 months at -20°C/-80°C. The shelf life of lyophilized form is 12 months at -20°C/-80°C.