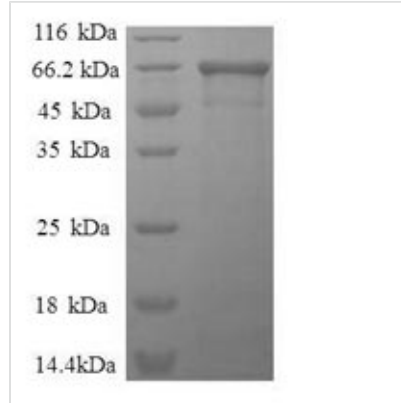


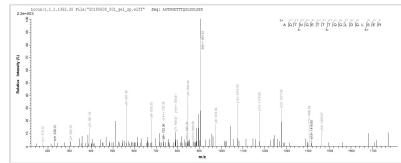


Recombinant Human Fructose-bisphosphate aldolase A (ALDOA)

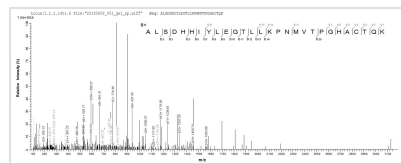
Product Code	CSB-EP001583HU
Relevance	Plays a key role in glycolysis and gluconeogenesis. In addition, may also function as scaffolding protein .
Abbreviation	Recombinant Human ALDOA protein
Storage	The shelf life is related to many factors, storage state, buffer ingredients, storage temperature and the stability of the protein itself. Generally, the shelf life of liquid form is 6 months at -20°C/-80°C. The shelf life of lyophilized form is 12 months at -20°C/-80°C.
Uniprot No.	P04075
Alias	Lung cancer antigen NY-LU-1Muscle-type aldolase
Product Type	Recombinant Protein
Immunogen Species	Homo sapiens (Human)
Purity	Greater than 90% as determined by SDS-PAGE.
Sequence	PYQYPALTPEQKKELSDIAHRIVAPGKGILAADESTGSIKRLQSIGTENTEENR RFYRQLLLTADDRVNPCIGGVILFHETLYQKADDGRFPFQVIKSKGGVVGKVD KGVVPLAGTNGETTTQGLDGLSERCAQYKKDGADFAKWRCVLKIGEHTPSAL AIMENANVLARYASICQQNGIVPIVEPEILPDGDHDLKRCQYVTEKVLAAVYKAL SDHHIYLEGTLLKPNMVTPGHACTQKFSHEEIAMATVTALRRTVPPAVTGITFL SGGQSEEEASINLNAINKCPLLKPWALTFSYGRALQASALKAWGGKKENLAAA QEEYVKRALANSLACQGKYTPSGQAGAAASESLFVSNHAY
Research Area	Metabolism
Source	E.coli
Target Names	ALDOA
Expression Region	2-364aa
Notes	Repeated freezing and thawing is not recommended. Store working aliquots at 4°C for up to one week.
Tag Info	N-terminal GST-tagged
Mol. Weight	66.3kDa
Protein Length	Full Length of Mature Protein
Image	



(Tris-Glycine gel) Discontinuous SDS-PAGE (reduced) with 5% enrichment gel and 15% separation gel.



Based on the SEQUEST from database of E.coli host and target protein, the LC-MS/MS Analysis result of CSB-RP000154h could indicate that this peptide derived from E.coli-expressed Homo sapiens (Human) ALDOA.



Based on the SEQUEST from database of E.coli host and target protein, the LC-MS/MS Analysis result of CSB-RP000154h could indicate that this peptide derived from E.coli-expressed Homo sapiens (Human) ALDOA.

Shelf Life

The shelf life is related to many factors, storage state, buffer ingredients, storage temperature and the stability of the protein itself.

Generally, the shelf life of liquid form is 6 months at -20°C/-80°C. The shelf life of lyophilized form is 12 months at -20°C/-80°C.