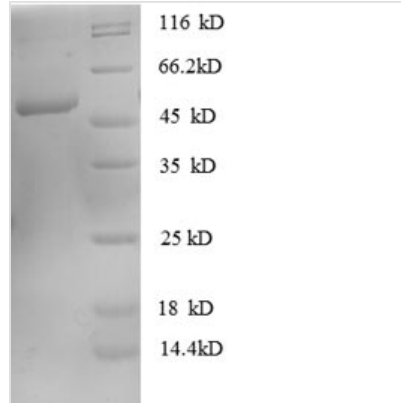




# Recombinant Human Rho GDP-dissociation inhibitor 1 (ARHGDI1)

<b>Product Code</b>	CSB-EP002037HU
<b>Relevance</b>	Controls Rho proteins homeostasis. Regulates the GDP/GTP exchange reaction of the Rho proteins by inhibiting the dissociation of GDP from th, and the subsequent binding of GTP to th. Retains Rho proteins such as CDC42, RAC1 and RHOA in an inactive cytosolic pool, regulating their stability and protecting th from degradation. Actively involved in the recycling and distribution of activated Rho GTPases in the cell, mediates extraction from mbranes of both inactive and activated molecules due its exceptionally high affinity for prenylated forms. Through the modulation of Rho proteins, may play a role in cell motility regulation. In glioma cells, inhibits cell migration and invasion by mediating the signals of SA5A and PLXNB3 that lead to inactivation of RAC1.
<b>Abbreviation</b>	Recombinant Human ARHGDI1 protein
<b>Storage</b>	The shelf life is related to many factors, storage state, buffer ingredients, storage temperature and the stability of the protein itself. Generally, the shelf life of liquid form is 6 months at -20°C/-80°C. The shelf life of lyophilized form is 12 months at -20°C/-80°C.
<b>Uniprot No.</b>	P52565
<b>Alias</b>	Rho-GDI alpha
<b>Product Type</b>	Recombinant Protein
<b>Immunogen Species</b>	Homo sapiens (Human)
<b>Purity</b>	≥ 90% as determined by SDS-PAGE.
<b>Sequence</b>	AEQEPTAEQLAQIAAENEDEHSVNYKPPAQKSIQEIQELDKDDESLRKYKEAL LGRVAVSADPNVNPVVVTGLTLVCSSAPGPLELDLTGDLESFKKQSFVLKEGV EYRIKISFRVNREIVSGMKYIQHTYRKGVKIDKTDYMGVSGPRAEEYEFLTPV EEAPKGM LARGSYSIKSRFTDDDKTDHLSWEWNLTIKKDWKD
<b>Research Area</b>	Signal Transduction
<b>Source</b>	E.coli
<b>Target Names</b>	ARHGDI1
<b>Expression Region</b>	2-204aa
<b>Notes</b>	Repeated freezing and thawing is not recommended. Store working aliquots at 4°C for up to one week.
<b>Tag Info</b>	N-terminal GST-tagged
<b>Mol. Weight</b>	50.1kDa
<b>Protein Length</b>	Full Length of Mature Protein
<b>Image</b>	



(Tris-Glycine gel) Discontinuous SDS-PAGE (reduced) with 5% enrichment gel and 15% separation gel.

### Shelf Life

The shelf life is related to many factors, storage state, buffer ingredients, storage temperature and the stability of the protein itself.

Generally, the shelf life of liquid form is 6 months at -20°C/-80°C. The shelf life of lyophilized form is 12 months at -20°C/-80°C.