

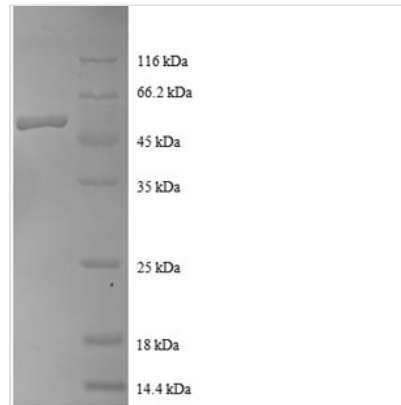


Recombinant Human Ras-related protein Rab-1A (RAB1A)

Product Code	CSB-EP019167HU
Relevance	The small GTPases Rab are key regulators of intracellular mbrane trafficking, from the formation of transport vesicles to their fusion with mbranes. Rabs cycle between an inactive GDP-bound form and an active GTP-bound form that is able to recruit to mbranes different sets of downstream effectors directly responsible for vesicle formation, movent, tethering and fusion. RAB1A regulates vesicular protein transport from the endoplasmic reticulum (ER) to the Golgi compartment and on to the cell surface, and plays a role in IL-8 and growth hormone secretion. Regulates the level of CASR present at the cell mbrane. Plays a role in cell adhesion and cell migration, via its role in protein trafficking. Plays a role in autophagosome assbly and cellular defense reactions against pathogenic bacteria. Plays a role in microtubule-dependent protein transport by early endosomes and in anterograde melanosome transport.
Abbreviation	Recombinant Human RAB1A protein
Storage	The shelf life is related to many factors, storage state, buffer ingredients, storage temperature and the stability of the protein itself. Generally, the shelf life of liquid form is 6 months at -20°C/-80°C. The shelf life of lyophilized form is 12 months at -20°C/-80°C.
Uniprot No.	P62820
Alias	YPT1-related protein
Product Type	Recombinant Protein
Immunogen Species	Homo sapiens (Human)
Purity	Greater than 90% as determined by SDS-PAGE.
Sequence	SSMNPEYDYLFKLLLIGDSGVGKSCLLLRFADDTYTESYISTIGVDFKIRTIELDG KTIKLQIWDTAGQERFRTITSSYYRGAHGIIVVYDVTQESFNNVKQWLQEIDR YASENVNKLKLVGNKCDLTTKKVVDYTTAKEFADSLGIPFLETSAKNATNVEQSF MTMAAEIKKRMGPGATAGGAEKSNVKIQSTPVKQSGGGCC
Research Area	Transport
Source	E.coli
Target Names	RAB1A
Expression Region	2-205aa
Notes	Repeated freezing and thawing is not recommended. Store working aliquots at 4°C for up to one week.
Tag Info	N-terminal GST-tagged
Mol. Weight	49.5kDa
Protein Length	Full Length of Mature Protein



Image



(Tris-Glycine gel) Discontinuous SDS-PAGE (reduced) with 5% enrichment gel and 15% separation gel.

Reconstitution

We recommend that this vial be briefly centrifuged prior to opening to bring the contents to the bottom. Please reconstitute protein in deionized sterile water to a concentration of 0.1-1.0 mg/mL. We recommend to add 5-50% of glycerol (final concentration) and aliquot for long-term storage at -20°C/-80°C. Our default final concentration of glycerol is 50%. Customers could use it as reference.

Shelf Life

The shelf life is related to many factors, storage state, buffer ingredients, storage temperature and the stability of the protein itself.

Generally, the shelf life of liquid form is 6 months at -20°C/-80°C. The shelf life of lyophilized form is 12 months at -20°C/-80°C.