

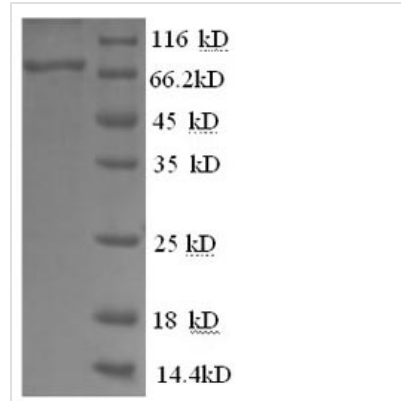


# Recombinant Human Glucose-6-phosphate isomerase (GPI), partial

<b>Product Code</b>	CSB-EP009717HU1
<b>Relevance</b>	Besides its role as a glycolytic enzyme, mammalian GPI can function as a tumor-secreted cytokine and an angiogenic factor (AMF) that stimulates endothelial cell motility. GPI is also a neurotrophic factor (Neuroleukin) for spinal and sensory neurons.
<b>Abbreviation</b>	Recombinant Human GPI protein, partial
<b>Storage</b>	The shelf life is related to many factors, storage state, buffer ingredients, storage temperature and the stability of the protein itself. Generally, the shelf life of liquid form is 6 months at -20°C/-80°C. The shelf life of lyophilized form is 12 months at -20°C/-80°C.
<b>Uniprot No.</b>	P06744
<b>Alias</b>	Autocrine motility factor ;AMFNeuroleukin ;NLKPhosphoglucose isomerase ;PGIPhosphohexose isomerase ;PHISperm antigen 36 ;SA-36
<b>Product Type</b>	Recombinant Protein
<b>Immunogen Species</b>	Homo sapiens (Human)
<b>Purity</b>	Greater than 90% as determined by SDS-PAGE.
<b>Sequence</b>	AALTRDPQFQKLQQWYREHRSELNLRRLFDANKDRFNHFSLTLNTNHGHILVD YSKNLVTEDVMRMLVDLAKSRGVEAARERMFNGEKINYTEGRAVLHVALRNR SNTPIVDGKDVMPEVNKVLDMKSFCQVRVSGDWKGYTGKTITDVLINIGIGG SDLGPLMVTEALKPYSSGGPRVWYVSNIDGTHIAKTLAQLNPESLFIASKTFT TQETITNAETAKEWFLQAADPSAVAKHFVALSTNTTKVKEFGIDPQNMFEFW DWVGGRYSLWSAIGLSIALHVGFDNFEQLLSGAHWMDQHFRTTPLEKNAPVL LALLGIWYINCFGCETHAMLPYDQYLHRFAAYFQQGDMESNGKYITKSGTRVD HQTGPIVWGEPTNGQHAFYQLIHQGTKMIPCDFLIPVQTQHPHPIRGLHKKILL ANFLAQTEALMRGKSTEEARKEKLAAGKSPEDLERLLPHKVFEGNRPTNSIVF TKLTPFMLGALVAMYEHKIFVQGIWDINSFDQWGVELGKQLAKKIEPELDGSA QVTSHDASTNGLINFIKQQR
<b>Research Area</b>	Signal Transduction
<b>Source</b>	E.coli
<b>Target Names</b>	GPI
<b>Expression Region</b>	2-554aa
<b>Notes</b>	Repeated freezing and thawing is not recommended. Store working aliquots at 4°C for up to one week.
<b>Tag Info</b>	N-terminal 6xHis-tagged
<b>Mol. Weight</b>	66.6kDa

**Protein Length**

Partial

**Image**

(Tris-Glycine gel) Discontinuous SDS-PAGE (reduced) with 5% enrichment gel and 15% separation gel.

**Reconstitution**

We recommend that this vial be briefly centrifuged prior to opening to bring the contents to the bottom. Please reconstitute protein in deionized sterile water to a concentration of 0.1-1.0 mg/mL. We recommend to add 5-50% of glycerol (final concentration) and aliquot for long-term storage at -20°C/-80°C. Our default final concentration of glycerol is 50%. Customers could use it as reference.

**Shelf Life**

The shelf life is related to many factors, storage state, buffer ingredients, storage temperature and the stability of the protein itself. Generally, the shelf life of liquid form is 6 months at -20°C/-80°C. The shelf life of lyophilized form is 12 months at -20°C/-80°C.