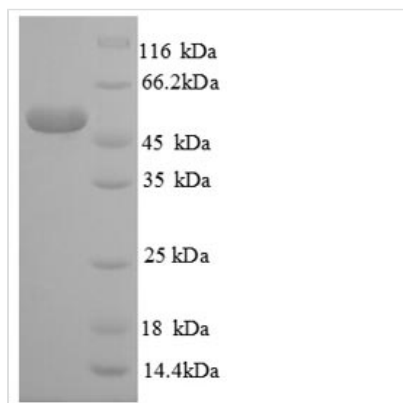




Recombinant Human Large ribosomal subunit protein eL14 (RPL14), partial

Product Code	CSB-RP005654h
Abbreviation	Recombinant Human RPL14 protein, partial
Storage	The shelf life is related to many factors, storage state, buffer ingredients, storage temperature and the stability of the protein itself. Generally, the shelf life of liquid form is 6 months at -20°C/-80°C. The shelf life of lyophilized form is 12 months at -20°C/-80°C.
Uniprot No.	P50914
Product Type	Recombinant Proteins
Immunogen Species	Homo sapiens (Human)
Purity	≥ 90% as determined by SDS-PAGE.
Sequence	VFRRFVEVGRVAYVSFGPHAGKLVAVDVIDQNRALVDGPCTQVRRQAMPFK CMQLTDFILKFPHTSAHQKYVRQAWQKADINTKWAATRWAKKIEARERKAKMT DFDRFKVMKAKKMRNRIIKNVKKLQKAALLKASPCKAPGKGTAAAAA AKVPAKKITAASKKAPAQKVPAQKATGQKAAPAPKAQKGGQKAPAQKAPKA SGKK
Research Area	Epigenetics and Nuclear Signaling
Source	E.coli
Target Names	RPL14
Expression Region	2-214aa
Notes	Repeated freezing and thawing is not recommended. Store working aliquots at 4°C for up to one week.
Tag Info	N-terminal GST-tagged
Mol. Weight	50.2kDa
Protein Length	Partial

Image



(Tris-Glycine gel) Discontinuous SDS-PAGE (reduced) with 5% enrichment gel and 15% separation gel.



Shelf Life

The shelf life is related to many factors, storage state, buffer ingredients, storage temperature and the stability of the protein itself.

Generally, the shelf life of liquid form is 6 months at -20°C/-80°C. The shelf life of lyophilized form is 12 months at -20°C/-80°C.