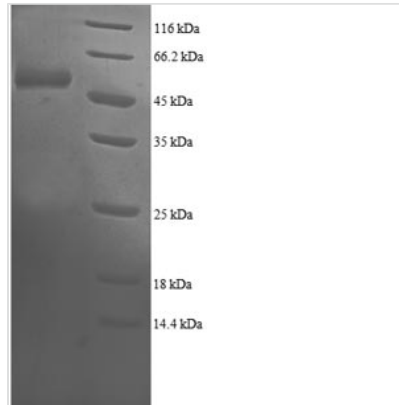




Recombinant Human Proteasome subunit beta type-4 (PSMB4)

Product Code	CSB-RP013744h
Relevance	The proteasome is a multicatalytic proteinase complex which is characterized by its ability to cleave peptides with Arg, Phe, Tyr, Leu, and Glu adjacent to the leaving group at neutral or slightly basic pH. The proteasome has an ATP-dependent proteolytic activity. Mediates the lipopolysaccharide-induced signal macrophage proteasome . SMAD1/OAZ1/PSMB4 complex mediates the degradation of the CREBBP/EP300 repressor SNIP1.1 Publication
Abbreviation	Recombinant Human PSMB4 protein
Storage	The shelf life is related to many factors, storage state, buffer ingredients, storage temperature and the stability of the protein itself. Generally, the shelf life of liquid form is 6 months at -20°C/-80°C. The shelf life of lyophilized form is 12 months at -20°C/-80°C.
Uniprot No.	P28070
Alias	26 kDa prosomal protein ;HsBPROS26 ;PROS-26Macropain beta chain;Multicatalytic endopeptidase complex beta chain;Proteasome beta chain;Proteasome chain 3 ;HsN3
Product Type	Recombinant Protein
Immunogen Species	Homo sapiens (Human)
Purity	Greater than 90% as determined by SDS-PAGE.
Sequence	TQNPMTGTSVLGVKFEKGGVIAADMLGSLARFRNISRIMRVNNSTMLGASGDYADFQYLKQVLGQMVIDEELLGDGHSYSPRAIHSWLTRAMYSRRSKMNP LWNTMVIIGGYADGESFLGYVDMLGVAYEAPSLATGYGAYLAQPLLREVLEKQ PVLSQTEARDLVERCMRVLYYRDARSYNRFQIATVTEKGVIEGPLSTETNWD IAHMISGFE
Research Area	Immunology
Source	E.coli
Target Names	PSMB4
Expression Region	46-264aa
Notes	Repeated freezing and thawing is not recommended. Store working aliquots at 4°C for up to one week.
Tag Info	N-terminal GST-tagged
Mol. Weight	51.4kDa
Protein Length	Full Length of Mature Protein
Image	



(Tris-Glycine gel) Discontinuous SDS-PAGE (reduced) with 5% enrichment gel and 15% separation gel.

Reconstitution

We recommend that this vial be briefly centrifuged prior to opening to bring the contents to the bottom. Please reconstitute protein in deionized sterile water to a concentration of 0.1-1.0 mg/mL. We recommend to add 5-50% of glycerol (final concentration) and aliquot for long-term storage at -20°C/-80°C. Our default final concentration of glycerol is 50%. Customers could use it as reference.

Shelf Life

The shelf life is related to many factors, storage state, buffer ingredients, storage temperature and the stability of the protein itself. Generally, the shelf life of liquid form is 6 months at -20°C/-80°C. The shelf life of lyophilized form is 12 months at -20°C/-80°C.