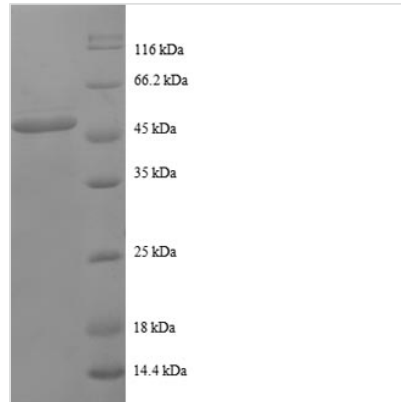




Recombinant Human Proteasome subunit beta type-2 (PSMB2)

Product Code	CSB-EP018879HU
Relevance	The proteasome is a multicatalytic proteinase complex which is characterized by its ability to cleave peptides with Arg, Phe, Tyr, Leu, and Glu adjacent to the leaving group at neutral or slightly basic pH. The proteasome has an ATP-dependent proteolytic activity. This subunit has a trypsin-like activity.
Abbreviation	Recombinant Human PSMB2 protein
Storage	The shelf life is related to many factors, storage state, buffer ingredients, storage temperature and the stability of the protein itself. Generally, the shelf life of liquid form is 6 months at -20°C/-80°C. The shelf life of lyophilized form is 12 months at -20°C/-80°C.
Uniprot No.	P49721
Alias	Macropain subunit C7-I Multicatalytic endopeptidase complex subunit C7-I Proteasome component C7-I
Product Type	Recombinant Protein
Immunogen Species	Homo sapiens (Human)
Purity	Greater than 90% as determined by SDS-PAGE.
Sequence	MEYLIQIGQPDYVVLVASDRVAASNIVQMKDDHDKMFKMSEKILLLCVGEAGDT VQFAEYIQKNVQLYKMRNGYELSPTAAANFTRRNLDCLRSRTPYHVNLLLAG YDEHEGPALYYMDYLAALAKAPFAAHGYGAFLTLSILDRIYPTISRERAVELL RKCLEELQKRIFLNLPFVSVRIIDKNGIHDLDNISFPKQGS
Research Area	Immunology
Source	E.coli
Target Names	PSMB2
Expression Region	1-201aa
Notes	Repeated freezing and thawing is not recommended. Store working aliquots at 4°C for up to one week.
Tag Info	N-terminal GST-tagged
Mol. Weight	49.8kDa
Protein Length	Full Length
Image	



(Tris-Glycine gel) Discontinuous SDS-PAGE (reduced) with 5% enrichment gel and 15% separation gel.

Reconstitution

We recommend that this vial be briefly centrifuged prior to opening to bring the contents to the bottom. Please reconstitute protein in deionized sterile water to a concentration of 0.1-1.0 mg/mL. We recommend to add 5-50% of glycerol (final concentration) and aliquot for long-term storage at -20°C/-80°C. Our default final concentration of glycerol is 50%. Customers could use it as reference.

Shelf Life

The shelf life is related to many factors, storage state, buffer ingredients, storage temperature and the stability of the protein itself. Generally, the shelf life of liquid form is 6 months at -20°C/-80°C. The shelf life of lyophilized form is 12 months at -20°C/-80°C.