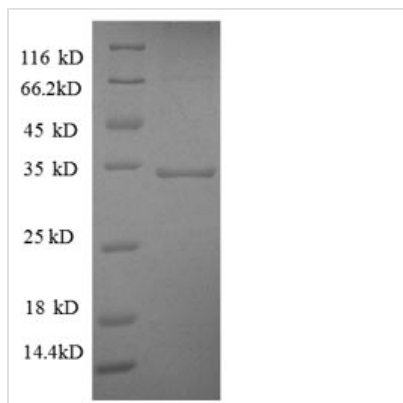


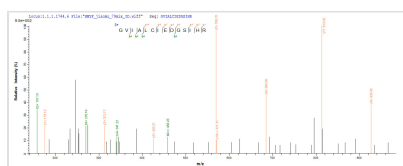


Recombinant Human Succinate dehydrogenase [ubiquinone] flavoprotein subunit, mitochondrial (SDHA), partial

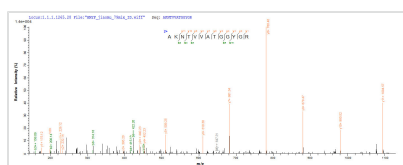
Product Code	CSB-EP020903HU1
Relevance	Flavoprotein (FP) subunit of succinate dehydrogenase (SDH) that is involved in complex II of the mitochondrial electron transport chain and is responsible for transferring electrons from succinate to ubiquinone (coenzyme Q). Can act as a tumor suppressor.
Abbreviation	Recombinant Human SDHA protein, partial
Storage	The shelf life is related to many factors, storage state, buffer ingredients, storage temperature and the stability of the protein itself. Generally, the shelf life of liquid form is 6 months at -20°C/-80°C. The shelf life of lyophilized form is 12 months at -20°C/-80°C.
Uniprot No.	P31040
Alias	Flavoprotein subunit of complex II ;Fp
Product Type	Recombinant Protein
Immunogen Species	Homo sapiens (Human)
Purity	Greater than 90% as determined by SDS-PAGE.
Sequence	SAKVSDSISAQYPVVDHEFDVVVGAGGAGLRAAFGLSEAGFNTACVTKLFPT RSHTVAAQGGINAALGNMEEDNWRWHFYDTVKGS DWLGDQDAIHYMTEQAP AAVVELENYGMPFSRTEDGKIYQRAFGGQSLKFGKGGQAHRCVVADRTGH SLLHTLYGRSLRYDTSYFVEYFALDLLMENGECRGVIALCIEDGSIHRIRAKNTV VATGGYGRTYFSCSAHTSTGDGTAMITRAGLPCQDLEFV
Research Area	Transport
Source	E.coli
Target Names	SDHA
Expression Region	44-293aa
Notes	Repeated freezing and thawing is not recommended. Store working aliquots at 4°C for up to one week.
Tag Info	N-terminal GST-tagged
Mol. Weight	54.1kDa
Protein Length	Partial
Image	



(Tris-Glycine gel) Discontinuous SDS-PAGE (reduced) with 5% enrichment gel and 15% separation gel.



Based on the SEQUEST from database of E.coli host and target protein, the LC-MS/MS Analysis result of CSB-RP019854h could indicate that this peptide derived from E.coli-expressed Homo sapiens (Human) SDHA.



Based on the SEQUEST from database of E.coli host and target protein, the LC-MS/MS Analysis result of CSB-RP019854h could indicate that this peptide derived from E.coli-expressed Homo sapiens (Human) SDHA.

Reconstitution

We recommend that this vial be briefly centrifuged prior to opening to bring the contents to the bottom. Please reconstitute protein in deionized sterile water to a concentration of 0.1-1.0 mg/mL. We recommend to add 5-50% of glycerol (final concentration) and aliquot for long-term storage at -20°C/-80°C. Our default final concentration of glycerol is 50%. Customers could use it as reference.

Shelf Life

The shelf life is related to many factors, storage state, buffer ingredients, storage temperature and the stability of the protein itself. Generally, the shelf life of liquid form is 6 months at -20°C/-80°C. The shelf life of lyophilized form is 12 months at -20°C/-80°C.