

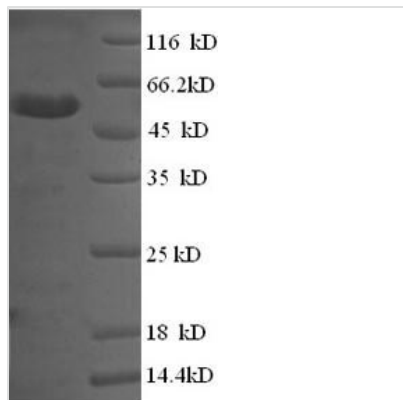


# Recombinant Human Membrane-associated phosphatidylinositol transfer protein 1 (PITPNM1), partial

<b>Product Code</b>	CSB-RP019954h
<b>Relevance</b>	Regulates RHOA activity, and plays a role in cytoskeleton remodeling. Necessary for normal completion of cytokinesis. Plays a role in maintaining normal diacylglycerol levels in the Golgi apparatus. Binds phosphatidylinositol phosphates (in vitro). May catalyze the transfer of phosphatidylinositol and phosphatidylcholine between membranes. Necessary for maintaining the normal structure of the endoplasmic reticulum and the Golgi apparatus. Required for protein export from the endoplasmic reticulum and the Golgi. Binds calcium ions. 4 Publications
<b>Abbreviation</b>	Recombinant Human PITPNM1 protein, partial
<b>Storage</b>	The shelf life is related to many factors, storage state, buffer ingredients, storage temperature and the stability of the protein itself. Generally, the shelf life of liquid form is 6 months at -20°C/-80°C. The shelf life of lyophilized form is 12 months at -20°C/-80°C.
<b>Uniprot No.</b>	O00562
<b>Alias</b>	Drosophila retinal degeneration B homolog Phosphatidylinositol transfer protein, membrane-associated 1 ; PITPnm 1; Pyk2 N-terminal domain-interacting receptor 2 ; NIR-2
<b>Product Type</b>	Recombinant Protein
<b>Immunogen Species</b>	Homo sapiens (Human)
<b>Purity</b>	≥ 90% as determined by SDS-PAGE.
<b>Sequence</b>	MLIKEYHILLPMSLDEYQVAQLYMIQKKSREESSGEGSGVEILANRPYTDGPGG SGQYTHKVYHVGSHIPGWFRALLPKAALQVEEESWNAYPYTRTRYTCPFVEK FSIEIETYLLPDGGQQPNVFNLSGAERRQRILDTIDIVRDAVAPGEYKAEEDPRL YHSVKTGRGPLSDDWARTAAQTGPLMCAYKLCKVEFRYWGMQAKIEQFIHDV GLRRVMLRAHRQAWCWQDEWTELSM
<b>Research Area</b>	Transport
<b>Source</b>	E.coli
<b>Target Names</b>	PITPNM1
<b>Expression Region</b>	1-238aa
<b>Notes</b>	Repeated freezing and thawing is not recommended. Store working aliquots at 4°C for up to one week.
<b>Tag Info</b>	N-terminal GST-tagged
<b>Mol. Weight</b>	54.5kDa

**Protein Length**

Partial

**Image**

(Tris-Glycine gel) Discontinuous SDS-PAGE (reduced) with 5% enrichment gel and 15% separation gel.

**Reconstitution**

We recommend that this vial be briefly centrifuged prior to opening to bring the contents to the bottom. Please reconstitute protein in deionized sterile water to a concentration of 0.1-1.0 mg/mL. We recommend to add 5-50% of glycerol (final concentration) and aliquot for long-term storage at -20°C/-80°C. Our default final concentration of glycerol is 50%. Customers could use it as reference.

**Shelf Life**

The shelf life is related to many factors, storage state, buffer ingredients, storage temperature and the stability of the protein itself. Generally, the shelf life of liquid form is 6 months at -20°C/-80°C. The shelf life of lyophilized form is 12 months at -20°C/-80°C.