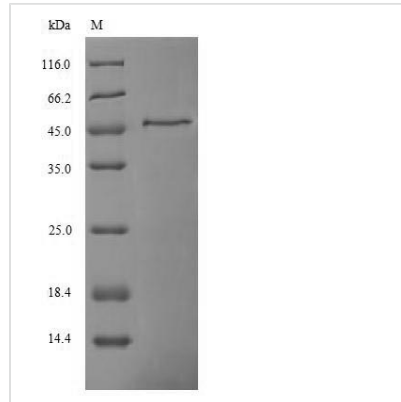




Recombinant Human Ferritin heavy chain (FTH1)

Product Code	CSB-EP009030HU1
Relevance	May be involved in gene regulation within neural lineage cells potentially by direct DNA binding or by binding to other transcription factors.
Abbreviation	Recombinant Human FTH1 protein
Storage	The shelf life is related to many factors, storage state, buffer ingredients, storage temperature and the stability of the protein itself. Generally, the shelf life of liquid form is 6 months at -20°C/-80°C. The shelf life of lyophilized form is 12 months at -20°C/-80°C.
Uniprot No.	P02794
Alias	Cysteine-rich protein TTG-1LIM domain only protein 1 ;LMO-1T-cell translocation protein 1
Product Type	Recombinant Protein
Immunogen Species	Homo sapiens (Human)
Purity	≥ 90% as determined by SDS-PAGE.
Sequence	TTASTSQVRQNYHQDSEAAINRQINLELYASYVYLSMSYYFDRDDVALKNFAK YFLHQSHREERHAEKLMKLNQRGGRIFLQDIKKPDCDDWESGLNAMECALH LEKNVNQSLLELHKLATDKNDPHLCDFIETHYLNQVKAIKELGDHVTNLRKMG APESGLAEYLFDKHTLGSDNES
Research Area	Metabolism
Source	E.coli
Target Names	FTH1
Expression Region	2-183aa
Notes	Repeated freezing and thawing is not recommended. Store working aliquots at 4°C for up to one week.
Tag Info	N-terminal GST-tagged
Mol. Weight	48.1kDa
Protein Length	Full Length of Mature Protein

Image



(Tris-Glycine gel) Discontinuous SDS-PAGE (reduced) with 5% enrichment gel and 15% separation gel.

Reconstitution

We recommend that this vial be briefly centrifuged prior to opening to bring the contents to the bottom. Please reconstitute protein in deionized sterile water to a concentration of 0.1-1.0 mg/mL. We recommend to add 5-50% of glycerol (final concentration) and aliquot for long-term storage at -20°C/-80°C. Our default final concentration of glycerol is 50%. Customers could use it as reference.

Shelf Life

The shelf life is related to many factors, storage state, buffer ingredients, storage temperature and the stability of the protein itself. Generally, the shelf life of liquid form is 6 months at -20°C/-80°C. The shelf life of lyophilized form is 12 months at -20°C/-80°C.