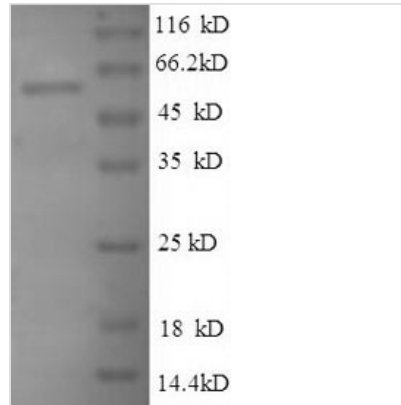




Recombinant Human 60S ribosomal protein L3 (RPL3), partial

Product Code	CSB-EP020224HU1
Relevance	The L3 protein is a component of the large subunit of Cytoplasmic domain ribosomes.
Abbreviation	Recombinant Human RPL3 protein, partial
Storage	The shelf life is related to many factors, storage state, buffer ingredients, storage temperature and the stability of the protein itself. Generally, the shelf life of liquid form is 6 months at -20°C/-80°C. The shelf life of lyophilized form is 12 months at -20°C/-80°C.
Uniprot No.	P39023
Product Type	Recombinant Proteins
Immunogen Species	Homo sapiens (Human)
Purity	Greater than 90% as determined by SDS-PAGE.
Sequence	SHRKFSAPRHGSLGFLPRKRSSRHRGKVKSF PKDDPSKPVHLTAFLGYKAGM THIVREVDPRPGSKVNKKEVVEAVTIVETPPMVVVGIVGYVETPRGLRFTKTVFA EHISDECKRRFYKNWHKSKKKAFTKYCKKWQDEDGKKQLEKDFSSMKKYCQ VIRVIAHTQMRLLPLRQKKAHLMEIQVNGGTVAEKLDWARERLEQQVPVNQVF GQDEMIDVIGVTKGKGYKGVTSRWHTKKLPRKTHRG
Research Area	Epigenetics and Nuclear Signaling
Source	E.coli
Target Names	RPL3
Expression Region	2-247aa
Notes	Repeated freezing and thawing is not recommended. Store working aliquots at 4°C for up to one week.
Tag Info	N-terminal GST-tagged
Mol. Weight	55.9kDa
Protein Length	Partial

Image



(Tris-Glycine gel) Discontinuous SDS-PAGE (reduced) with 5% enrichment gel and 15% separation gel.

Shelf Life

The shelf life is related to many factors, storage state, buffer ingredients, storage temperature and the stability of the protein itself.

Generally, the shelf life of liquid form is 6 months at -20°C/-80°C. The shelf life of lyophilized form is 12 months at -20°C/-80°C.