

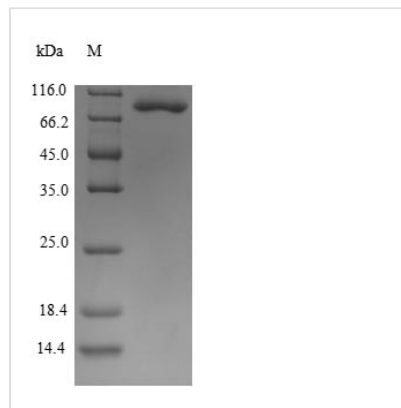


Recombinant Human Alpha-enolase (ENO1), partial

Product Code	CSB-EP007670HU1
Relevance	Multifunctional enzyme that, as well as its role in glycolysis, plays a part in various processes such as growth control, hypoxia tolerance and allergic responses. May also function in the intravascular and pericellular fibrinolytic syst due to its ability to serve as a receptor and activator of plasminogen on the cell surface of several cell-types such as leukocytes and neurons. Stimulates immunoglobulin production.MBP1 binds to the myc promoter and acts as a transcriptional repressor. May be a tumor suppressor.
Storage	The shelf life is related to many factors, storage state, buffer ingredients, storage temperature and the stability of the protein itself. Generally, the shelf life of liquid form is 6 months at -20°C/-80°C. The shelf life of lyophilized form is 12 months at -20°C/-80°C.
Uniprot No.	P06733
Alias	2-phospho-D-glycerate hydro-lyaseC-myc promoter-binding protein;Enolase 1MBP-1MPB-1Non-neural enolase ;NNEPhosphopyruvate hydratasePlasminogen-binding protein
Product Type	Recombinant Protein
Immunogen Species	Homo sapiens (Human)
Purity	Greater than 90% as determined by SDS-PAGE.
Sequence	SILKIHAREIFDSRGNPTVEVDLFTSKGLFRAAVPSGASTGIYEALELRDNDKTR YMGKGVSKAVEHINKTIAPALVSKKLNVTQEKEIDKLMIEMDGTENKSKFGANA ILGVSLAVCKAGAVEKGVPLYRHIADLAGNSEVILPVPAFNVINGGSHAGNKLA MQEFMILPVGAANFREAMRIGAEVYHNLKNVIKEKYGKDATNVGDEGGFAPNI LENKEGLELLKTAIGKAGYTDKVVIGMDVAASEFFRSGKYDLDFKSPDDPSRYI SPDQLADLYKSFIDYPVVSIEDPFDQDDWGAWQKFTASAGIQVVGDDLTVTN PKRIAKAVNEKSCNCLLLKVNQIGSVTESLQACKLAQANGWGMVSHRSGET EDTFIADLVVGLCTGQIKTGAPCRSERLAKYNQLLRIIEELGSKAKFAGRNF
Research Area	Metabolism
Source	E.coli
Target Names	ENO1
Expression Region	2-428aa
Notes	Repeated freezing and thawing is not recommended. Store working aliquots at 4°C for up to one week.
Tag Info	N-terminal GST-tagged
Mol. Weight	73.4kDa
Protein Length	Partial



Image



(Tris-Glycine gel) Discontinuous SDS-PAGE (reduced) with 5% enrichment gel and 15% separation gel.

Description

Dive deeper into metabolic research with our premium Recombinant Human ENO1 protein. Alpha-enolase, also known as 2-phospho-D-glycerate hydrolyase, C-myc promoter-binding protein, Enolase 1, and MBP-1, is a key enzyme in glycolysis that catalyzes the conversion of 2-phosphoglycerate into phosphoenolpyruvate. Beyond its role in metabolism, this versatile protein is involved in numerous cellular processes, such as cell growth, differentiation, and apoptosis.

Expressed in E.coli, our recombinant ENO1 protein encompasses a partial 2-428aa region, designed with an N-terminal GST tag for efficient purification. Boasting a purity greater than 90% as determined by SDS-PAGE, the Recombinant Human ENO1 protein is supplied as a lyophilized powder, ensuring optimal stability and performance in your experiments. Enhance your metabolic research with this high-quality and reliable protein resource.

Reconstitution

We recommend that this vial be briefly centrifuged prior to opening to bring the contents to the bottom. Please reconstitute protein in deionized sterile water to a concentration of 0.1-1.0 mg/mL. We recommend to add 5-50% of glycerol (final concentration) and aliquot for long-term storage at -20°C/-80°C. Our default final concentration of glycerol is 50%. Customers could use it as reference.

Shelf Life

The shelf life is related to many factors, storage state, buffer ingredients, storage temperature and the stability of the protein itself.

Generally, the shelf life of liquid form is 6 months at -20°C/-80°C. The shelf life of lyophilized form is 12 months at -20°C/-80°C.