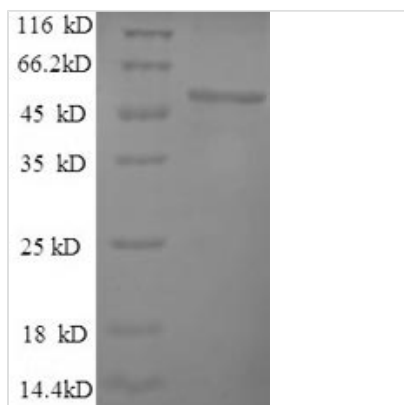




Recombinant Human 60S ribosomal protein L15 (RPL15)

Product Code	CSB-RP024354h
Abbreviation	Recombinant Human RPL15 protein
Storage	The shelf life is related to many factors, storage state, buffer ingredients, storage temperature and the stability of the protein itself. Generally, the shelf life of liquid form is 6 months at -20°C/-80°C. The shelf life of lyophilized form is 12 months at -20°C/-80°C.
Uniprot No.	P61313
Product Type	Recombinant Protein
Immunogen Species	Homo sapiens (Human)
Purity	≥ 90% as determined by SDS-PAGE.
Sequence	GAYKYIQELWRKKQSDVMRFLLRVRCWQYRQLSALHRAPRPRTRPDKARRLG YKAKQGYVIYRIRVRRGGRKRPVPGATYGKPVHHGVNQLKFARSLQSVAAE RAGRHCALRVLNSYWVGEDSTYKFFEVLIDPFHKAIRRNPDQWITKPVHK HREMRGLTSAGRKSRGLGKGHKFHHTIGGSRRAAWRRRNTLQLHRYR
Research Area	Epigenetics and Nuclear Signaling
Source	E.coli
Target Names	RPL15
Expression Region	2-204aa
Notes	Repeated freezing and thawing is not recommended. Store working aliquots at 4°C for up to one week.
Tag Info	N-terminal GST-tagged
Mol. Weight	51.0kDa
Protein Length	Full Length of Mature Protein

Image



(Tris-Glycine gel) Discontinuous SDS-PAGE (reduced) with 5% enrichment gel and 15% separation gel.

Reconstitution

We recommend that this vial be briefly centrifuged prior to opening to bring the



contents to the bottom. Please reconstitute protein in deionized sterile water to a concentration of 0.1-1.0 mg/mL. We recommend to add 5-50% of glycerol (final concentration) and aliquot for long-term storage at -20°C/-80°C. Our default final concentration of glycerol is 50%. Customers could use it as reference.

Shelf Life

The shelf life is related to many factors, storage state, buffer ingredients, storage temperature and the stability of the protein itself.

Generally, the shelf life of liquid form is 6 months at -20°C/-80°C. The shelf life of lyophilized form is 12 months at -20°C/-80°C.