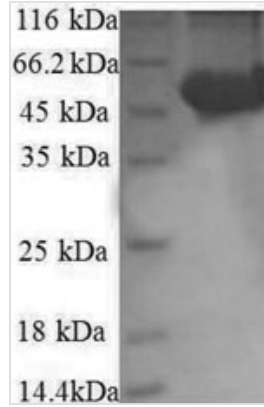




# Recombinant Human Ribosomal protein S6 kinase beta-2 (RPS6KB2), partial

<b>Product Code</b>	CSB-RP029054h
<b>Relevance</b>	Phosphorylates specifically ribosomal protein S6.
<b>Abbreviation</b>	Recombinant Human RPS6KB2 protein, partial
<b>Storage</b>	The shelf life is related to many factors, storage state, buffer ingredients, storage temperature and the stability of the protein itself. Generally, the shelf life of liquid form is 6 months at -20°C/-80°C. The shelf life of lyophilized form is 12 months at -20°C/-80°C.
<b>Uniprot No.</b>	Q9UBS0
<b>Alias</b>	70 kDa ribosomal protein S6 kinase 2 ;P70S6K2 ;p70-S6K 2S6 kinase-related kinase ;SRKSerine/threonine-protein kinase 14Bp70 ribosomal S6 kinase beta ;S6K-beta ;p70 S6 kinase beta ;p70 S6K-beta ;p70 S6KB ;p70-beta
<b>Product Type</b>	Recombinant Protein
<b>Immunogen Species</b>	Homo sapiens (Human)
<b>Purity</b>	Greater than 90% as determined by SDS-PAGE.
<b>Sequence</b>	MAAVFDLDLETEEGSEGEPELSPADACPLAELRAAGLEPVGHYEEVELTET SVNVGPERIGPHCFELLRLVLGKGGYGKVFQVRKVQGTNLGKIYAMKVLKAKI VRNAKDTAHTRAERNILESVKHPFIVELAYAFQTGGKLYLILECLSGGELFTHLE REGIFLEDTACFYLAEITLALGHLHSQGIIYRDLKPENIMLSSQGHIKL
<b>Research Area</b>	Signal Transduction
<b>Source</b>	E.coli
<b>Target Names</b>	RPS6KB2
<b>Expression Region</b>	1-210aa
<b>Notes</b>	Repeated freezing and thawing is not recommended. Store working aliquots at 4°C for up to one week.
<b>Tag Info</b>	N-terminal GST-tagged
<b>Mol. Weight</b>	50.2kDa
<b>Protein Length</b>	Partial
<b>Image</b>	



(Tris-Glycine gel) Discontinuous SDS-PAGE (reduced) with 5% enrichment gel and 15% separation gel.

### Reconstitution

We recommend that this vial be briefly centrifuged prior to opening to bring the contents to the bottom. Please reconstitute protein in deionized sterile water to a concentration of 0.1-1.0 mg/mL. We recommend to add 5-50% of glycerol (final concentration) and aliquot for long-term storage at -20°C/-80°C. Our default final concentration of glycerol is 50%. Customers could use it as reference.

### Shelf Life

The shelf life is related to many factors, storage state, buffer ingredients, storage temperature and the stability of the protein itself. Generally, the shelf life of liquid form is 6 months at -20°C/-80°C. The shelf life of lyophilized form is 12 months at -20°C/-80°C.