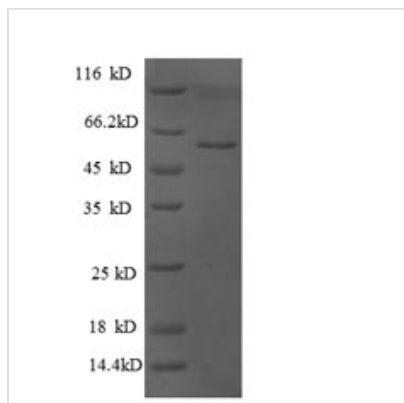




# Recombinant Human Glucosidase 2 subunit beta (PRKCSH), partial

<b>Product Code</b>	CSB-RP029254h
<b>Relevance</b>	Regulatory subunit of glucosidase II.
<b>Abbreviation</b>	Recombinant Human PRKCSH protein, partial
<b>Storage</b>	The shelf life is related to many factors, storage state, buffer ingredients, storage temperature and the stability of the protein itself. Generally, the shelf life of liquid form is 6 months at -20°C/-80°C. The shelf life of lyophilized form is 12 months at -20°C/-80°C.
<b>Uniprot No.</b>	P14314
<b>Alias</b>	80K-H protein;Glucosidase II subunit betaProtein kinase C substrate 60.1 kDa protein heavy chain ;PKCSH
<b>Product Type</b>	Recombinant Protein
<b>Immunogen Species</b>	Homo sapiens (Human)
<b>Purity</b>	≥ 90% as determined by SDS-PAGE.
<b>Sequence</b>	VEVKRPRGVSLTNHHFYDESKPFTCLDGSATIPFDQVNDYCDCKDGSDEPG TAACPNGSFHCTNTGYKPLYIPSNRVNDGVCDCCDGTDEYNSGVICENTCKE KGRKERESLQQMAEVTREGFRLKILIEDWKKAREEKQKKLIELQAGKKSLED QVEMLRTVKEEAKEPEREAKEQHQLWEEQLAAAKAQEQELAADAFKELDD DMDGTVSVTELQTHPELDTDGDGALSEAEAQALLSGDTQTDATSFYDRVWAA IRDKYRSEALPTDLPAPSAPDLTEPKE
<b>Research Area</b>	Signal Transduction
<b>Source</b>	E.coli
<b>Target Names</b>	PRKCSH
<b>Expression Region</b>	15-302aa
<b>Notes</b>	Repeated freezing and thawing is not recommended. Store working aliquots at 4°C for up to one week.
<b>Tag Info</b>	N-terminal GST-tagged
<b>Mol. Weight</b>	59.3kDa
<b>Protein Length</b>	Partial
<b>Image</b>	



(Tris-Glycine gel) Discontinuous SDS-PAGE (reduced) with 5% enrichment gel and 15% separation gel.

### Reconstitution

We recommend that this vial be briefly centrifuged prior to opening to bring the contents to the bottom. Please reconstitute protein in deionized sterile water to a concentration of 0.1-1.0 mg/mL. We recommend to add 5-50% of glycerol (final concentration) and aliquot for long-term storage at -20°C/-80°C. Our default final concentration of glycerol is 50%. Customers could use it as reference.

### Shelf Life

The shelf life is related to many factors, storage state, buffer ingredients, storage temperature and the stability of the protein itself. Generally, the shelf life of liquid form is 6 months at -20°C/-80°C. The shelf life of lyophilized form is 12 months at -20°C/-80°C.