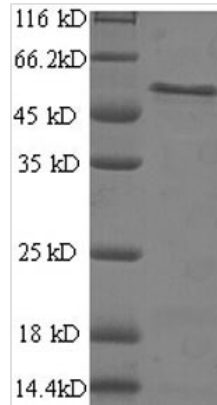




Recombinant Human B-cell receptor-associated protein 31 (BCAP31), partial

Product Code	CSB-RP034254h
Relevance	Functions as a chaperone protein. Is one of the most abundant endoplasmic reticulum (ER) proteins. Plays a role in the export of secreted proteins in the ER, the recognition of abnormally folded protein and their targeting to the ER associated-degradation (ERAD). Also serves as a cargo receptor for the export of transmembrane proteins. May be involved in CASP8-mediated apoptosis.
Storage	The shelf life is related to many factors, storage state, buffer ingredients, storage temperature and the stability of the protein itself. Generally, the shelf life of liquid form is 6 months at -20°C/-80°C. The shelf life of lyophilized form is 12 months at -20°C/-80°C.
Uniprot No.	P51572
Alias	6C6-AG tumor-associated antigen;Protein CDMp28
Product Type	Recombinant Protein
Immunogen Species	Homo sapiens (Human)
Purity	≥ 90% as determined by SDS-PAGE.
Sequence	SLQWTAVATFLYAEVFFVLLLCIPFISPKRWQKIFKSRLVELLVSYGNTFFVVLIV ILVLLVIDAVREIRKYDDVTEKVNQLQNNPGAMEHFHMKLFRAQRNLYIAGFSLLL SFLRLRLVTLISQQATLLASNEAFKKQAESASEAAKKYMEENDQLKKGAAVDG GKLDVGNAEVKLEEEENRSLKADLQKLKDELASTKQKLEKAENQVLAMRKQSE GLTKEYDRLLLEEHAQLQAQAVDGPMDK
Research Area	Apoptosis
Source	E.coli
Target Names	BCAP31
Expression Region	2-243aa
Notes	Repeated freezing and thawing is not recommended. Store working aliquots at 4°C for up to one week.
Tag Info	N-terminal GST-tagged
Mol. Weight	54.5kDa
Protein Length	Partial
Image	



(Tris-Glycine gel) Discontinuous SDS-PAGE (reduced) with 5% enrichment gel and 15% separation gel.

Reconstitution

We recommend that this vial be briefly centrifuged prior to opening to bring the contents to the bottom. Please reconstitute protein in deionized sterile water to a concentration of 0.1-1.0 mg/mL. We recommend to add 5-50% of glycerol (final concentration) and aliquot for long-term storage at -20°C/-80°C. Our default final concentration of glycerol is 50%. Customers could use it as reference.

Shelf Life

The shelf life is related to many factors, storage state, buffer ingredients, storage temperature and the stability of the protein itself. Generally, the shelf life of liquid form is 6 months at -20°C/-80°C. The shelf life of lyophilized form is 12 months at -20°C/-80°C.