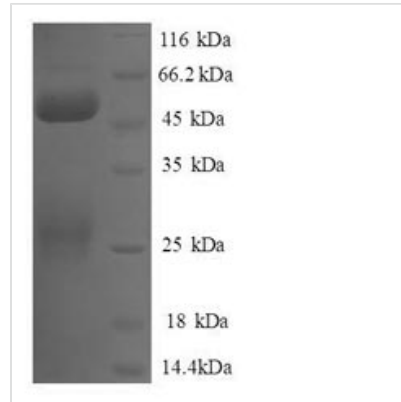




# Recombinant Human Negative elongation factor B (NELFB), partial

<b>Product Code</b>	CSB-RP037654h
<b>Relevance</b>	Essential component of the NELF complex, a complex that negatively regulates the elongation of transcription by RNA polymerase II. The NELF complex, which acts via an association with the DSIF complex and causes transcriptional pausing, is counteracted by the P-TEFb kinase complex. May be able to induce chromatin unfolding.
<b>Abbreviation</b>	Recombinant Human NELFB protein, partial
<b>Storage</b>	The shelf life is related to many factors, storage state, buffer ingredients, storage temperature and the stability of the protein itself. Generally, the shelf life of liquid form is 6 months at -20°C/-80°C. The shelf life of lyophilized form is 12 months at -20°C/-80°C.
<b>Uniprot No.</b>	Q8WX92
<b>Alias</b>	Cofactor of BR;CA1
<b>Product Type</b>	Recombinant Protein
<b>Immunogen Species</b>	Homo sapiens (Human)
<b>Purity</b>	≥ 90% as determined by SDS-PAGE.
<b>Sequence</b>	LGVANGEDLKETLTNCTEPLKAIEQFQTENGVLLPSLQSQALPFLDLHGTPRLEF HQSVFDELDRDKLLERVSIAIASEGKAEERYKKLEDLLEKSFSLVKMPSLQPVVM CVMKHLPKVPEKKLKLVMADKELYRACAVEVKRQIWQDNQALFGDEVSPLLK QYILEKESALFSTELSVLHNFFSPSPKTRRQGE
<b>Research Area</b>	Transcription
<b>Source</b>	E.coli
<b>Target Names</b>	NELFB
<b>Expression Region</b>	8-199aa
<b>Notes</b>	Repeated freezing and thawing is not recommended. Store working aliquots at 4°C for up to one week.
<b>Tag Info</b>	N-terminal GST-tagged
<b>Mol. Weight</b>	48.9kDa
<b>Protein Length</b>	Partial
<b>Image</b>	



(Tris-Glycine gel) Discontinuous SDS-PAGE (reduced) with 5% enrichment gel and 15% separation gel.

### Reconstitution

We recommend that this vial be briefly centrifuged prior to opening to bring the contents to the bottom. Please reconstitute protein in deionized sterile water to a concentration of 0.1-1.0 mg/mL. We recommend to add 5-50% of glycerol (final concentration) and aliquot for long-term storage at -20°C/-80°C. Our default final concentration of glycerol is 50%. Customers could use it as reference.

### Shelf Life

The shelf life is related to many factors, storage state, buffer ingredients, storage temperature and the stability of the protein itself. Generally, the shelf life of liquid form is 6 months at -20°C/-80°C. The shelf life of lyophilized form is 12 months at -20°C/-80°C.