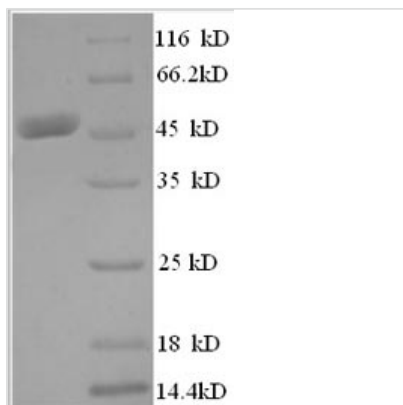


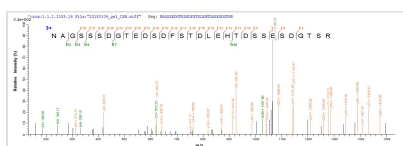


Recombinant Human Histone acetyltransferase MYST2 (KAT7), partial

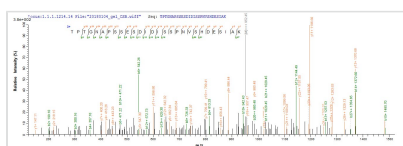
Product Code	CSB-RP038644h
Relevance	Component of the HBO1 complex which has a histone H4-specific acetyltransferase activity, a reduced activity toward histone H3 and is responsible for the bulk of histone H4 acetylation in vivo. Through chromatin acetylation it may regulate DNA replication and act as a coactivator of TP53-dependent transcription. Specifically represses AR-mediated transcription.
Abbreviation	Recombinant Human KAT7 protein, partial
Storage	The shelf life is related to many factors, storage state, buffer ingredients, storage temperature and the stability of the protein itself. Generally, the shelf life of liquid form is 6 months at -20°C/-80°C. The shelf life of lyophilized form is 12 months at -20°C/-80°C.
Uniprot No.	O95251
Alias	Histone acetyltransferase binding to OR;C1Lysine acetyltransferase 7MOZ, YBF2/SAS3, SAS2 and TIP60 protein 2 ;MYST-2
Product Type	Recombinant Protein
Immunogen Species	Homo sapiens (Human)
Purity	≥ 90% as determined by SDS-PAGE.
Sequence	MPRRKRNAGSSSDGTEDSDFSTDLEHTDSSES DGTSRRSARVTRSSARLSQ SSQDSSPVRNLQSFSGTEEPAYSTRRVTRSQQQPTPVTPKKYPLRQTRSSGSE TEQVVD FSDRET KNTADHDESPPR TPTGNAPSS ES DIDISSPNVSHDESI AKD MSLKDSGSDLSHRPKRRRFHESYNFMKCPTPGCNSLGHLTGKHERHFSIG CPLYHN
Research Area	Transcription
Source	E.coli
Target Names	KAT7
Expression Region	1-214aa
Notes	Repeated freezing and thawing is not recommended. Store working aliquots at 4°C for up to one week.
Tag Info	N-terminal GST-tagged
Mol. Weight	50.8kDa
Protein Length	Partial
Image	



(Tris-Glycine gel) Discontinuous SDS-PAGE (reduced) with 5% enrichment gel and 15% separation gel.



Based on the SEQUEST from database of E.coli host and target protein, the LC-MS/MS Analysis result of CSB-RP038644h could indicate that this peptide derived from E.coli-expressed Homo sapiens (Human) KAT7.



Based on the SEQUEST from database of E.coli host and target protein, the LC-MS/MS Analysis result of CSB-RP038644h could indicate that this peptide derived from E.coli-expressed Homo sapiens (Human) KAT7.

Reconstitution

We recommend that this vial be briefly centrifuged prior to opening to bring the contents to the bottom. Please reconstitute protein in deionized sterile water to a concentration of 0.1-1.0 mg/mL. We recommend to add 5-50% of glycerol (final concentration) and aliquot for long-term storage at -20°C/-80°C. Our default final concentration of glycerol is 50%. Customers could use it as reference.

Shelf Life

The shelf life is related to many factors, storage state, buffer ingredients, storage temperature and the stability of the protein itself. Generally, the shelf life of liquid form is 6 months at -20°C/-80°C. The shelf life of lyophilized form is 12 months at -20°C/-80°C.