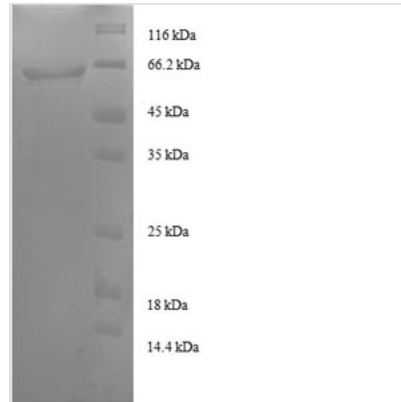




Recombinant Human Transaldolase (TALDO1), partial

Product Code	CSB-RP042754h
Relevance	Transaldolase is important for the balance of metabolites in the pentose-phosphate pathway.
Abbreviation	Recombinant Human TALDO1 protein, partial
Storage	The shelf life is related to many factors, storage state, buffer ingredients, storage temperature and the stability of the protein itself. Generally, the shelf life of liquid form is 6 months at -20°C/-80°C. The shelf life of lyophilized form is 12 months at -20°C/-80°C.
Uniprot No.	P37837
Product Type	Recombinant Protein
Immunogen Species	Homo sapiens (Human)
Purity	≥ 90% as determined by SDS-PAGE.
Sequence	QRMESALDQLKQFTTVVADTGDFHAIDEYKPQDATTNPSLILAAAQMPAYQEL VEEAIAYGRKLGGSQEDQIKNAIDKLFVLFGAIEILKKIPGRVSTEVDARLSFDKD AMVARARRLIELYKEAGISKDRILIKLSSTWEGIQAGKELEEQHGHCNMTLLFS FAQAVACAEAGVTLISPFVGRILDWHVANTDKKSYELEDPGVKSVTKIYNYK KFSYKTIVMGASFRNTGEIKALAGCDFLTISP KLLGELLQDNAKLVPVLSAKAAQ ASDLEKIHLDEKSFRWLHNEDQMAVEKLSDGIRKFAADAVKLERMLTERM FNA ENGK
Research Area	Metabolism
Source	E.coli
Target Names	TALDO1
Expression Region	9-337aa
Notes	Repeated freezing and thawing is not recommended. Store working aliquots at 4°C for up to one week.
Tag Info	N-terminal GST-tagged
Mol. Weight	63.7kDa
Protein Length	Partial
Image	



(Tris-Glycine gel) Discontinuous SDS-PAGE (reduced) with 5% enrichment gel and 15% separation gel.

Reconstitution

We recommend that this vial be briefly centrifuged prior to opening to bring the contents to the bottom. Please reconstitute protein in deionized sterile water to a concentration of 0.1-1.0 mg/mL. We recommend to add 5-50% of glycerol (final concentration) and aliquot for long-term storage at -20°C/-80°C. Our default final concentration of glycerol is 50%. Customers could use it as reference.

Shelf Life

The shelf life is related to many factors, storage state, buffer ingredients, storage temperature and the stability of the protein itself. Generally, the shelf life of liquid form is 6 months at -20°C/-80°C. The shelf life of lyophilized form is 12 months at -20°C/-80°C.