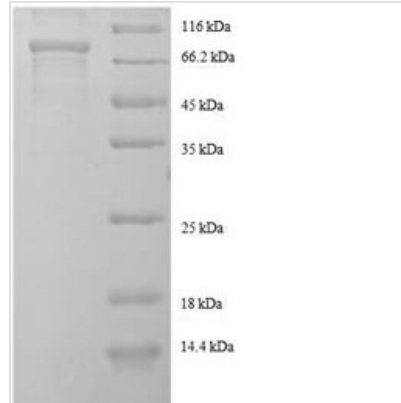




Recombinant Human EF-hand domain-containing protein KIAA0494 (KIAA0494), partial

Product Code	CSB-RP044944h
Abbreviation	Recombinant Human KIAA0490 protein, partial
Storage	The shelf life is related to many factors, storage state, buffer ingredients, storage temperature and the stability of the protein itself. Generally, the shelf life of liquid form is 6 months at -20°C/-80°C. The shelf life of lyophilized form is 12 months at -20°C/-80°C.
Uniprot No.	O75071
Product Type	Recombinant Protein
Immunogen Species	Homo sapiens (Human)
Purity	Greater than 90% as determined by SDS-PAGE.
Sequence	MKKRKELNALIGLAGDSRRKKPKKGPSSHLLRTEPPDSDSESSSEEEEEFGV VGNRSRFAKGDYLRCKKICYPLCGFVILAAACVVACVGLVWMQVALKEDLDALK EKFRMTMESNQKSSFQEIPKLNEELLSKQKQLEKIESGEMGLNKVWINITEMNKQ ISLLTSAVNHLKANVKSAADLISLPTTVEGLQKSVASIGNTLNSVHLAVEALQKT VDEHKKTMEELLQSDMNQHFLKETPGSNQIIPSPSATSELDNKTHSENKQDILY LHNSLEEVSALVGYQRQNDLKLEGMNETVSNLTQRVNLIESDVVAMSKVEKK ANLSFSMMGDRSATLKRQSLDQVTNRTDTVKIQSIKKEDSSNSQVSKLREKLQ LISALTNKPESNRPPETADEEQVESFTSKPSALPKFSQFLGDPVEKAAQLRPIS LPGVSSTEDLQDLFRKTGQDVDGKLTQYQEIWTSLGSAPEPELRAFSDSDGD GR
Research Area	Epigenetics and Nuclear Signaling
Source	E.coli
Target Names	EFCAB14
Expression Region	1-483aa
Notes	Repeated freezing and thawing is not recommended. Store working aliquots at 4°C for up to one week.
Tag Info	N-terminal GST-tagged
Mol. Weight	80.7kDa
Protein Length	Partial
Image	



(Tris-Glycine gel) Discontinuous SDS-PAGE (reduced) with 5% enrichment gel and 15% separation gel.

Reconstitution

We recommend that this vial be briefly centrifuged prior to opening to bring the contents to the bottom. Please reconstitute protein in deionized sterile water to a concentration of 0.1-1.0 mg/mL. We recommend to add 5-50% of glycerol (final concentration) and aliquot for long-term storage at -20°C/-80°C. Our default final concentration of glycerol is 50%. Customers could use it as reference.

Shelf Life

The shelf life is related to many factors, storage state, buffer ingredients, storage temperature and the stability of the protein itself. Generally, the shelf life of liquid form is 6 months at -20°C/-80°C. The shelf life of lyophilized form is 12 months at -20°C/-80°C.