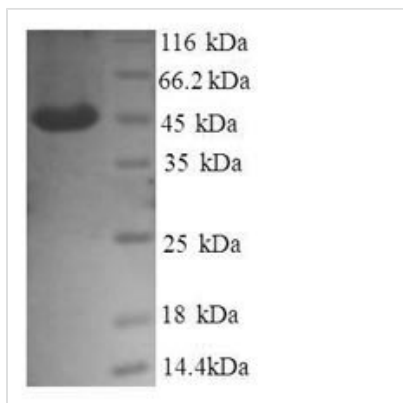




Recombinant Human Transmembrane emp24 domain-containing protein 9 (GP25L2), partial

Product Code	CSB-RP048044h
Relevance	Appears to be involved in vesicular protein trafficking, mainly in the early secretory pathway. In COPI vesicle-mediated retrograde transport involved in the coatamer recruitment to mbranes of the early secretory pathway. Increases coatamer-dependent activity of ARFGAP2. Thought to play a crucial role in the specific retention of p24 complexes in cis-Golgi mbranes; specifically contributes to the coupled localization of TMED2 and TMED10 in the cis-Golgi network. May be involved in organization of intracellular mbranes, such as of the ER-Golgi intermediate compartment and the Golgi apparatus. Involved in ER localization of PTPN2 isoform PTPB.
Abbreviation	Recombinant Human GP25L2 protein, partial
Storage	The shelf life is related to many factors, storage state, buffer ingredients, storage temperature and the stability of the protein itself. Generally, the shelf life of liquid form is 6 months at -20°C/-80°C. The shelf life of lyophilized form is 12 months at -20°C/-80°C.
Uniprot No.	Q9BVK6
Alias	GMP25Glycoprotein 25L2p24 family protein alpha-2 ;p24alpha2p25
Product Type	Recombinant Protein
Immunogen Species	Homo sapiens (Human)
Purity	Greater than 90% as determined by SDS-PAGE.
Sequence	FHIGETEKKCFIEEIPDETMVIGNYRTQLYDKQREEYQPATPGLGMFVEVKDPE DKVILARQYGSEGRFTFTSHTPGEHQICLHSNSTKFSLFAGGMLRVHLDIQVG EHANDYAEIAAKDKLSELQLRVRQLVEQVEQIQKEQNYQRWREERFRQTSE
Research Area	Signal Transduction
Source	E.coli
Target Names	TMED9
Expression Region	40-197aa
Notes	Repeated freezing and thawing is not recommended. Store working aliquots at 4°C for up to one week.
Tag Info	N-terminal GST-tagged
Mol. Weight	45.5kDa
Protein Length	Partial
Image	



(Tris-Glycine gel) Discontinuous SDS-PAGE (reduced) with 5% enrichment gel and 15% separation gel.

Reconstitution

We recommend that this vial be briefly centrifuged prior to opening to bring the contents to the bottom. Please reconstitute protein in deionized sterile water to a concentration of 0.1-1.0 mg/mL. We recommend to add 5-50% of glycerol (final concentration) and aliquot for long-term storage at -20°C/-80°C. Our default final concentration of glycerol is 50%. Customers could use it as reference.

Shelf Life

The shelf life is related to many factors, storage state, buffer ingredients, storage temperature and the stability of the protein itself. Generally, the shelf life of liquid form is 6 months at -20°C/-80°C. The shelf life of lyophilized form is 12 months at -20°C/-80°C.