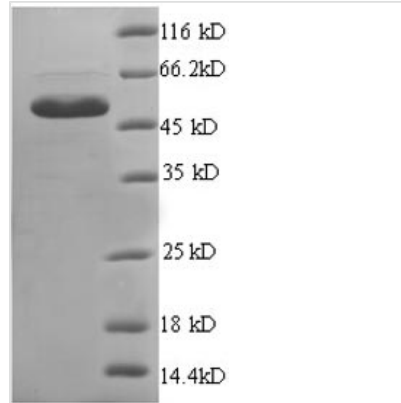




Recombinant Human Endoplasmic reticulum resident protein 29 (ERP29), partial

Product Code	CSB-EP007800HU1
Relevance	Does not se to be a disulfide isomerase. Plays an important role in the processing of secretory proteins within the endoplasmic reticulum (ER), possibly by participating in the folding of proteins in the ER.
Abbreviation	Recombinant Human ERP29 protein, partial
Storage	The shelf life is related to many factors, storage state, buffer ingredients, storage temperature and the stability of the protein itself. Generally, the shelf life of liquid form is 6 months at -20°C/-80°C. The shelf life of lyophilized form is 12 months at -20°C/-80°C.
Uniprot No.	P30040
Alias	Endoplasmic reticulum resident protein 28 ;ERp28Endoplasmic reticulum resident protein 31 ;ERp31
Product Type	Recombinant Protein
Immunogen Species	Homo sapiens (Human)
Purity	≥ 90% as determined by SDS-PAGE.
Sequence	PLDVTVFYKVIPKSKFVLVKFDTQYPYGEKQDEFKRLAENSASSDDLLVAEVGI SDYGDKLNMESEKYKLDKESYPVYFLFRDGDGFENPVPYTGAVKVGAIQRWL KGQGVYLGMPGCLPVYDALAGEFIRASGVEARQALLKQGQDNLSSVKETQKK WAEQYLKIMGKILDQGEDFPASEMTRIALRIEKNKMSDGKKEELQKSLNILTAF
Research Area	Signal Transduction
Source	E.coli
Target Names	ERP29
Expression Region	40-251aa
Notes	Repeated freezing and thawing is not recommended. Store working aliquots at 4°C for up to one week.
Tag Info	N-terminal GST-tagged
Mol. Weight	51.0kDa
Protein Length	Partial
Image	



(Tris-Glycine gel) Discontinuous SDS-PAGE (reduced) with 5% enrichment gel and 15% separation gel.

Reconstitution

We recommend that this vial be briefly centrifuged prior to opening to bring the contents to the bottom. Please reconstitute protein in deionized sterile water to a concentration of 0.1-1.0 mg/mL. We recommend to add 5-50% of glycerol (final concentration) and aliquot for long-term storage at -20°C/-80°C. Our default final concentration of glycerol is 50%. Customers could use it as reference.

Shelf Life

The shelf life is related to many factors, storage state, buffer ingredients, storage temperature and the stability of the protein itself. Generally, the shelf life of liquid form is 6 months at -20°C/-80°C. The shelf life of lyophilized form is 12 months at -20°C/-80°C.