

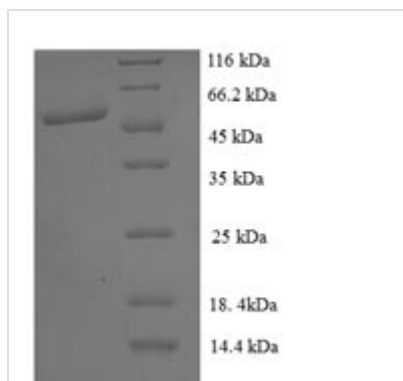


# Recombinant Human PRKCA-binding protein (PICK1), partial

<b>Product Code</b>	CSB-RP054454h
<b>Relevance</b>	Probable adapter protein that bind to and organize the subcellular localization of a variety of mbrane proteins containing some PDZ recognition sequence. Involved in the clustering of various receptors, possibly by acting at the receptor internalization level. Plays a role in synaptic plasticity by regulating the trafficking and internalization of AMPA receptors. May be regulated upon PRKCA activation. May regulate ASIC1/ASIC3 channel. Regulates actin polymerization by inhibiting the actin-nucleating activity of the Arp2/3 complex; the function is competetive with nucleation promoting factors and is linked to neuronal morphology regulation and AMPA receptor (AMPA) endocytosis. Via interaction with the Arp2/3 complex involved in regulation of synaptic plasicity of excitatory synapses and required for spine shrinkage during long-term depression (LTD). Involved in regulation of astrocyte morphology, antagonistic to Arp2/3 complex activator WASL/N-WASP function.
<b>Abbreviation</b>	Recombinant Human PICK1 protein, partial
<b>Storage</b>	The shelf life is related to many factors, storage state, buffer ingredients, storage temperature and the stability of the protein itself. Generally, the shelf life of liquid form is 6 months at -20°C/-80°C. The shelf life of lyophilized form is 12 months at -20°C/-80°C.
<b>Uniprot No.</b>	Q9NRD5
<b>Alias</b>	Protein interacting with C kinase 1;Protein kinase C-alpha-binding protein
<b>Product Type</b>	Recombinant Protein
<b>Immunogen Species</b>	Homo sapiens (Human)
<b>Purity</b>	≥ 90% as determined by SDS-PAGE.
<b>Sequence</b>	MFADLDYDIEEDKLGIP TVPGKVTLQKDAQNLIGISIGGGAQYCPCLYIVQVFDN TPAALDGTVAAGDEITGVNGRS IKGKTKVEVAKMIQEVKGEVTIHYNKLQADPK QGMSLDIVLKKVKHRLVENMSSGTADALGLSRAILCNDGLVKRLEELERTAELY KGMTEHTKNLLRAFYE LSQTHRAFGDVFSVIGVREPQ
<b>Research Area</b>	Signal Transduction
<b>Source</b>	E.coli
<b>Target Names</b>	PICK1
<b>Expression Region</b>	1-200aa
<b>Notes</b>	Repeated freezing and thawing is not recommended. Store working aliquots at 4°C for up to one week.
<b>Tag Info</b>	N-terminal GST-tagged
<b>Mol. Weight</b>	48.9kDa

**Protein Length**

Partial

**Image**

(Tris-Glycine gel) Discontinuous SDS-PAGE (reduced) with 5% enrichment gel and 15% separation gel.

**Reconstitution**

We recommend that this vial be briefly centrifuged prior to opening to bring the contents to the bottom. Please reconstitute protein in deionized sterile water to a concentration of 0.1-1.0 mg/mL. We recommend to add 5-50% of glycerol (final concentration) and aliquot for long-term storage at -20°C/-80°C. Our default final concentration of glycerol is 50%. Customers could use it as reference.

**Shelf Life**

The shelf life is related to many factors, storage state, buffer ingredients, storage temperature and the stability of the protein itself.

Generally, the shelf life of liquid form is 6 months at -20°C/-80°C. The shelf life of lyophilized form is 12 months at -20°C/-80°C.