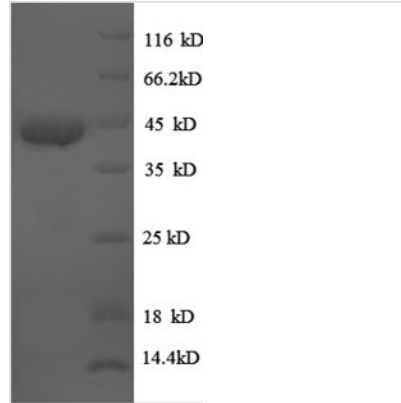




# Recombinant Human Bone morphogenetic protein 7 (BMP7)

<b>Product Code</b>	CSB-EP002744HUe0
<b>Relevance</b>	Induces cartilage and bone formation. May be the osteoinductive factor responsible for the phenomenon of epithelial osteogenesis. Plays a role in calcium regulation and bone homeostasis.
<b>Abbreviation</b>	Recombinant Human BMP7 protein
<b>Storage</b>	The shelf life is related to many factors, storage state, buffer ingredients, storage temperature and the stability of the protein itself. Generally, the shelf life of liquid form is 6 months at -20°C/-80°C. The shelf life of lyophilized form is 12 months at -20°C/-80°C.
<b>Uniprot No.</b>	P18075
<b>Alias</b>	Osteogenic protein 1 ;OP-1INN: Eptotermin alfa
<b>Product Type</b>	Recombinant Protein
<b>Immunogen Species</b>	Homo sapiens (Human)
<b>Purity</b>	≥ 90% as determined by SDS-PAGE.
<b>Sequence</b>	STGSKQRSQNRSKTPKNQEALRMANVAENSSSSDQRQACKKHELYVSFRDLG WQDWIIAPEGYAAYYCEGECAFLNSYMNATNHAIVQTLVHFINPETVPKPCC APTQLNAISVLYFDDSSNVILKKYRNMVVRACGCH
<b>Research Area</b>	Developmental Biology
<b>Source</b>	E.coli
<b>Target Names</b>	BMP7
<b>Expression Region</b>	293-431aa
<b>Notes</b>	Repeated freezing and thawing is not recommended. Store working aliquots at 4°C for up to one week.
<b>Tag Info</b>	N-terminal GST-tagged
<b>Mol. Weight</b>	42.7kDa
<b>Protein Length</b>	Full Length of Mature Protein
<b>Image</b>	



(Tris-Glycine gel) Discontinuous SDS-PAGE (reduced) with 5% enrichment gel and 15% separation gel.

### Reconstitution

We recommend that this vial be briefly centrifuged prior to opening to bring the contents to the bottom. Please reconstitute protein in deionized sterile water to a concentration of 0.1-1.0 mg/mL. We recommend to add 5-50% of glycerol (final concentration) and aliquot for long-term storage at -20°C/-80°C. Our default final concentration of glycerol is 50%. Customers could use it as reference.

### Shelf Life

The shelf life is related to many factors, storage state, buffer ingredients, storage temperature and the stability of the protein itself. Generally, the shelf life of liquid form is 6 months at -20°C/-80°C. The shelf life of lyophilized form is 12 months at -20°C/-80°C.