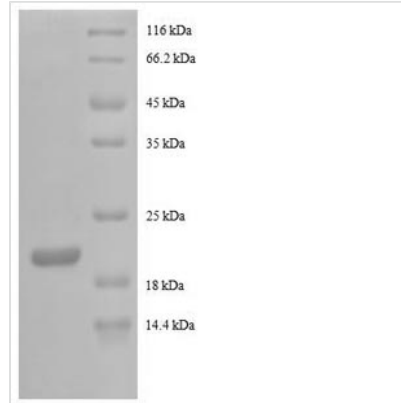




# Recombinant Human Granulocyte colony-stimulating factor protein (CSF-3), partial

<b>Product Code</b>	CSB-EP006049HU1
<b>Relevance</b>	Cytokine that stimulates the growth and differentiation of hatopoietic precursor cells from various lineages, including granulocytes, macrophages, eosinophils and erythrocytes.
<b>Abbreviation</b>	Recombinant Human CSF3 protein, partial
<b>Storage</b>	The shelf life is related to many factors, storage state, buffer ingredients, storage temperature and the stability of the protein itself. Generally, the shelf life of liquid form is 6 months at -20°C/-80°C. The shelf life of lyophilized form is 12 months at -20°C/-80°C.
<b>Uniprot No.</b>	P09919
<b>Alias</b>	Colony-stimulating factor ;CSFMolgramostin;Sargramostim
<b>Product Type</b>	Recombinant Protein
<b>Immunogen Species</b>	Homo sapiens (Human)
<b>Purity</b>	Greater than $\geq 90\%$ as determined by SDS-PAGE.
<b>Sequence</b>	VQEATPLGPASSLPQSFLKCLEQVRKIQGDGAALQEKLIVSECATYKLCHP EE LVLLGHSLGIPWAPLSSCPSQALQLAGCLSQLHSGFLFYQGLLQALEGISPELG PTLDTLQLDVADFATTIWQQMEELGMAPALQPTQGAMPAFASAFQRRAGGVL VASHLQSFLEVSYRV
<b>Research Area</b>	Immunology
<b>Source</b>	E.coli
<b>Target Names</b>	CSF3
<b>Expression Region</b>	27-200aa
<b>Notes</b>	Repeated freezing and thawing is not recommended. Store working aliquots at 4°C for up to one week.
<b>Tag Info</b>	N-terminal 6xHis-tagged
<b>Mol. Weight</b>	22.6kDa
<b>Protein Length</b>	Partial
<b>Image</b>	



(Tris-Glycine gel) Discontinuous SDS-PAGE (reduced) with 5% enrichment gel and 15% separation gel.

### Reconstitution

We recommend that this vial be briefly centrifuged prior to opening to bring the contents to the bottom. Please reconstitute protein in deionized sterile water to a concentration of 0.1-1.0 mg/mL. We recommend to add 5-50% of glycerol (final concentration) and aliquot for long-term storage at -20°C/-80°C. Our default final concentration of glycerol is 50%. Customers could use it as reference.

### Shelf Life

The shelf life is related to many factors, storage state, buffer ingredients, storage temperature and the stability of the protein itself. Generally, the shelf life of liquid form is 6 months at -20°C/-80°C. The shelf life of lyophilized form is 12 months at -20°C/-80°C.