



Recombinant Rat Insulin-like growth factor I (Igf1)

Product Code CSB-EP362300RA

Relevance

The insulin-like growth factors, isolated from plasma, are structurally and functionally related to insulin but have a much higher growth-promoting activity. May be a physiological regulator of [1-14C]-2-deoxy-D-glucose (2DG) transport and glycogen synthesis in osteoblasts. Stimulates glucose transport in rat bone-derived osteoblastic (PyMS) cells and is effective at much lower concentrations than insulin, not only regarding glycogen and DNA synthesis but also with regard to enhancing glucose uptake. May play a role in synapse maturation .

Abbreviation Recombinant Rat Igf1 protein

Storage The shelf life is related to many factors, storage state, buffer ingredients, storage temperature and the stability of the protein itself. Generally, the shelf life of liquid form is 6 months at -20°C/-80°C. The shelf life of lyophilized form is 12 months at -20°C/-80°C.

Uniprot No. P08025

Product Type Recombinant Proteins

Immunogen Species Rattus norvegicus (Rat)

Purity ≥ 90% as determined by SDS-PAGE.

Sequence GPETLCGAELVDALQFVCGPRGFYFNKPTGYGSSIRRAPQTGIVDECCFRSCD
LRRLEMYCAPLKPTKSA

Research Area Signal Transduction

Source E.coli

Target Names Igf1

Expression Region 49-118

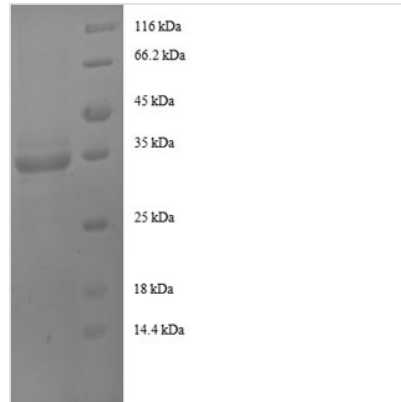
Notes Repeated freezing and thawing is not recommended. Store working aliquots at 4°C for up to one week.

Tag Info N-terminal GST-tagged

Mol. Weight 34.7kDa

Protein Length Full Length of Mature Protein

Image



(Tris-Glycine gel) Discontinuous SDS-PAGE (reduced) with 5% enrichment gel and 15% separation gel.

Shelf Life

The shelf life is related to many factors, storage state, buffer ingredients, storage temperature and the stability of the protein itself.

Generally, the shelf life of liquid form is 6 months at -20°C/-80°C. The shelf life of lyophilized form is 12 months at -20°C/-80°C.