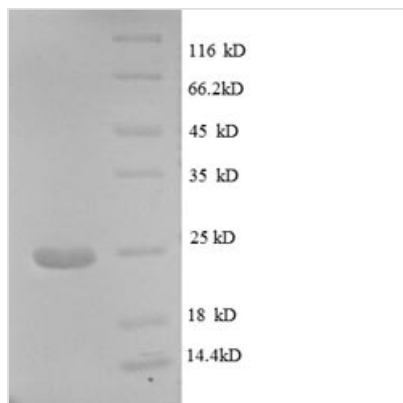




Recombinant Human papillomavirus type 18 L1 protein (L1), partial

Product Code	CSB-EP361951HMN1
Relevance	Forms an icosahedral capsid with a T=7 symmetry and about 55 nm diameter. The capsid is composed of 72 pentamers linked to each other by disulfide bonds and associated with L2 proteins. The capsid encapsulates the genomic DNA, but does not bind DNA. Essential for the initial attachment to the host cell .
Storage	The shelf life is related to many factors, storage state, buffer ingredients, storage temperature and the stability of the protein itself. Generally, the shelf life of liquid form is 6 months at -20°C/-80°C. The shelf life of lyophilized form is 12 months at -20°C/-80°C.
Uniprot No.	P06794
Product Type	Recombinant Proteins
Immunogen Species	Homo sapiens (Human)
Purity	Greater than 90% as determined by SDS-PAGE.
Sequence	GSIVTSDSSQLFNKPYWLHKAQGHNNGVCWHNQLFVTVVDTTPSTNLTICAST QSPVPGQYDATKFKQYSRHVEEYDLQFIFQLCTITLTADVMSYIHSMNSSILED WNFGVPPPPTTSLVDTYRFVQSVAITCQKDAAPAENKDPYDKLKFVNVDLKE KFSLDLDQYPLGRKFLVQ
Research Area	Others
Source	E.coli
Target Names	L1
Expression Region	358-533aa
Notes	Repeated freezing and thawing is not recommended. Store working aliquots at 4°C for up to one week.
Tag Info	N-terminal 6xHis-tagged
Mol. Weight	24.1kDa
Protein Length	Partial

Image



(Tris-Glycine gel) Discontinuous SDS-PAGE (reduced) with 5% enrichment gel and 15% separation gel.

Shelf Life

The shelf life is related to many factors, storage state, buffer ingredients, storage temperature and the stability of the protein itself.

Generally, the shelf life of liquid form is 6 months at -20°C/-80°C. The shelf life of lyophilized form is 12 months at -20°C/-80°C.