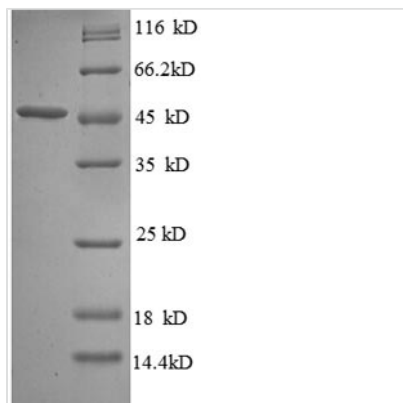




# Recombinant Escherichia coli Probable diguanylate cyclase DgcQ (dgcQ), partial, partial

<b>Product Code</b>	CSB-RP085244Ba
<b>Relevance</b>	Involved in the regulation of cellulose production. Cyclic-di-GMP is a second messenger which controls cell surface-associated traits in bacteria.
<b>Abbreviation</b>	Recombinant E.coli dgcQ protein, partial
<b>Storage</b>	The shelf life is related to many factors, storage state, buffer ingredients, storage temperature and the stability of the protein itself. Generally, the shelf life of liquid form is 6 months at -20°C/-80°C. The shelf life of lyophilized form is 12 months at -20°C/-80°C.
<b>Uniprot No.</b>	P76330
<b>Alias</b>	Cellulose synthesis regulatory protein
<b>Product Type</b>	Recombinant Protein
<b>Immunogen Species</b>	Escherichia coli (strain K12)
<b>Purity</b>	≥ 90% as determined by SDS-PAGE.
<b>Sequence</b>	RRMVSNMYVLQSSLQWQAWHDTLTRLNRYGALFEKARPLAKLCQTHQHPFS VIQVDLDHFKAINDRFGHQAGDRVLSHAAGLISSSLRAQDVAGRVGGEEFCVIL PGASLTEAAEVAERIRLKLNEKEMLIKSTTIRISASLGVSSSEETGDYDFEQLQ SLADRRRLYLAKQAGRNRVAFSDNA
<b>Research Area</b>	Others
<b>Source</b>	E.coli
<b>Target Names</b>	dgcQ
<b>Expression Region</b>	381-564aa
<b>Notes</b>	Repeated freezing and thawing is not recommended. Store working aliquots at 4°C for up to one week.
<b>Tag Info</b>	N-terminal GST-tagged
<b>Mol. Weight</b>	47.5kDa
<b>Protein Length</b>	Partial
<b>Image</b>	



(Tris-Glycine gel) Discontinuous SDS-PAGE (reduced) with 5% enrichment gel and 15% separation gel.

### Reconstitution

We recommend that this vial be briefly centrifuged prior to opening to bring the contents to the bottom. Please reconstitute protein in deionized sterile water to a concentration of 0.1-1.0 mg/mL. We recommend to add 5-50% of glycerol (final concentration) and aliquot for long-term storage at -20°C/-80°C. Our default final concentration of glycerol is 50%. Customers could use it as reference.

### Shelf Life

The shelf life is related to many factors, storage state, buffer ingredients, storage temperature and the stability of the protein itself. Generally, the shelf life of liquid form is 6 months at -20°C/-80°C. The shelf life of lyophilized form is 12 months at -20°C/-80°C.