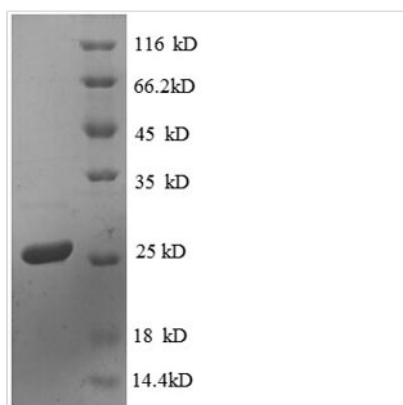




Recombinant Escherichia coli 30S ribosomal protein S4 (rpsD)

Product Code	CSB-RP086274Ba
Relevance	One of two assbly initiator proteins for the 30S subunit, it binds directly to 16S rRNA where it nucleates assbly of the body of the 30S subunit.With S5 and S12 plays an important role in translational accuracy; many suppressors of streptomycin-dependent mutants of protein S12 are found in this protein, some but not all of which decrease translational accuracy (ram, ribosomal ambiguity mutations).Plays a role in mRNA unwinding by the ribosome, possibly by forming part of a processivity clamp.Protein S4 is also a translational repressor protein, it controls the translation of the alpha-operon (which codes for S13, S11, S4, RNA polymerase alpha subunit, and L17) by binding to its mRNA.Also functions as a rho-dependent antiterminator of rRNA transcription, increasing the synthesis of rRNA under conditions of excess protein, allowing a more rapid return to homeostasis. Binds directly to RNA polymerase.
Abbreviation	Recombinant E.coli rpsD protein
Storage	The shelf life is related to many factors, storage state, buffer ingredients, storage temperature and the stability of the protein itself. Generally, the shelf life of liquid form is 6 months at -20°C/-80°C. The shelf life of lyophilized form is 12 months at -20°C/-80°C.
Uniprot No.	P0A7V8
Product Type	Recombinant Protein
Immunogen Species	Escherichia coli (strain K12)
Purity	Greater than 90% as determined by SDS-PAGE.
Sequence	ARYLGPKLKLSRREGTDLFLKSGVRAIDTKCKIEQAPGQHGARKPRLSDYGVQ LREKQKVRRIYGVLERQFRNYYKEAARLKGNTGENLLALLEGRLDNVVYRMGF GATRAEARQLVSHKAIMVNGRVVNIASYQVSPNDVVSIREKAKKQSRVKAAL LAEQREKPTWLEVDAGKMEGTFKRKPERSDLSADINEHLIVELYSK
Research Area	Others
Source	E.coli
Target Names	rpsD
Expression Region	2-206aa
Notes	Repeated freezing and thawing is not recommended. Store working aliquots at 4°C for up to one week.
Tag Info	N-terminal 6xHis-tagged
Mol. Weight	27.3kDa
Protein Length	Full Length of Mature Protein
Image	



(Tris-Glycine gel) Discontinuous SDS-PAGE (reduced) with 5% enrichment gel and 15% separation gel.

Reconstitution

We recommend that this vial be briefly centrifuged prior to opening to bring the contents to the bottom. Please reconstitute protein in deionized sterile water to a concentration of 0.1-1.0 mg/mL. We recommend to add 5-50% of glycerol (final concentration) and aliquot for long-term storage at -20°C/-80°C. Our default final concentration of glycerol is 50%. Customers could use it as reference.

Shelf Life

The shelf life is related to many factors, storage state, buffer ingredients, storage temperature and the stability of the protein itself. Generally, the shelf life of liquid form is 6 months at -20°C/-80°C. The shelf life of lyophilized form is 12 months at -20°C/-80°C.