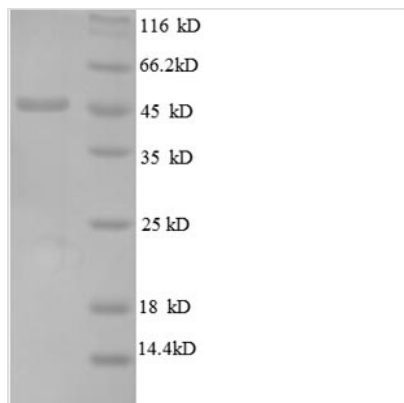




Recombinant Escherichia coli 50S ribosomal protein L6 (rpIF), partial

Product Code	CSB-RP087844Ba
Relevance	This protein binds directly to at least 2 domains of the 23S ribosomal RNA, thus is important in its secondary structure. It is located near the subunit interface in the base of the L7/L12 stalk, and near the tRNA binding site of the peptidyltransferase center. Gentamicin-resistant mutations in this protein affect translation fidelity.
Abbreviation	Recombinant E.coli rpIF protein, partial
Storage	The shelf life is related to many factors, storage state, buffer ingredients, storage temperature and the stability of the protein itself. Generally, the shelf life of liquid form is 6 months at -20°C/-80°C. The shelf life of lyophilized form is 12 months at -20°C/-80°C.
Uniprot No.	P0AG55
Product Type	Recombinant Protein
Immunogen Species	Escherichia coli (strain K12)
Purity	≥ 90% as determined by SDS-PAGE.
Sequence	SRVAKAPVVVPAGVDVKINGQVITIKGKNGELTRTLNDAVEVKHADNTLTFGPR DGYADGWAQAGTARALLNSMVIGVTEGFTKKLQLVGVGYRAAVKGNVINLSL GFSHPVDHQLPAGITAECPQTQTEIVLKGADKQVIGQVAADLRAYRRPEPEYKGG GVRVADEVVVRTKEAK
Research Area	Others
Source	E.coli
Target Names	rpIF
Expression Region	2-175aa
Notes	Repeated freezing and thawing is not recommended. Store working aliquots at 4°C for up to one week.
Tag Info	N-terminal GST-tagged
Mol. Weight	45.5kDa
Protein Length	Partial
Image	



(Tris-Glycine gel) Discontinuous SDS-PAGE (reduced) with 5% enrichment gel and 15% separation gel.

Reconstitution

We recommend that this vial be briefly centrifuged prior to opening to bring the contents to the bottom. Please reconstitute protein in deionized sterile water to a concentration of 0.1-1.0 mg/mL. We recommend to add 5-50% of glycerol (final concentration) and aliquot for long-term storage at -20°C/-80°C. Our default final concentration of glycerol is 50%. Customers could use it as reference.

Shelf Life

The shelf life is related to many factors, storage state, buffer ingredients, storage temperature and the stability of the protein itself. Generally, the shelf life of liquid form is 6 months at -20°C/-80°C. The shelf life of lyophilized form is 12 months at -20°C/-80°C.