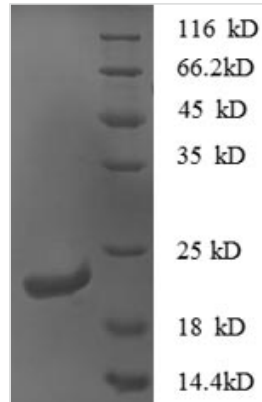




Recombinant Mouse C-X-C motif chemokine 16 (Cxcl16), partial

Product Code	CSB-RP093374m
Relevance	Induces a strong chotactic response. Induces calcium mobilization. Binds to CXCR6/Bonzo. Also acts as a scavenger receptor on macrophages, which specifically binds to OxLDL (oxidized low density lipoprotein), suggesting that it may be involved in pathophysiology such as atherogenesis.
Abbreviation	Recombinant Mouse Cxcl16 protein, partial
Storage	The shelf life is related to many factors, storage state, buffer ingredients, storage temperature and the stability of the protein itself. Generally, the shelf life of liquid form is 6 months at -20°C/-80°C. The shelf life of lyophilized form is 12 months at -20°C/-80°C.
Uniprot No.	Q8BSU2
Alias	Scavenger receptor for phosphatidylserine and oxidized low density lipoprotein ;SR-PSOXSmall-inducible cytokine B16Transmembrane chemokine CXCL16
Product Type	Recombinant Protein
Immunogen Species	Mus musculus (Mouse)
Purity	≥ 90% as determined by SDS-PAGE.
Sequence	NQGSVAGSCSCDRTISSGTQIPQGTLDHIRKYLKAFHRCPPFFIRFQLQSKSVCG GSQDQWVRELVDLDCFERKECGTGHGKSFHHQKHLPQASTQTPEAAEGTPSDT STPAHSQSTQHSTLPSGALS LNKEHTQPWEMTTLP SGYGLLEARPEAEANEKQ QDDRQQEAPGAGAST
Research Area	Others
Source	E.coli
Target Names	Cxcl16
Expression Region	27-198aa
Notes	Repeated freezing and thawing is not recommended. Store working aliquots at 4°C for up to one week.
Tag Info	N-terminal 6xHis-tagged
Mol. Weight	22.7kDa
Protein Length	Partial
Image	



(Tris-Glycine gel) Discontinuous SDS-PAGE (reduced) with 5% enrichment gel and 15% separation gel.

Reconstitution

We recommend that this vial be briefly centrifuged prior to opening to bring the contents to the bottom. Please reconstitute protein in deionized sterile water to a concentration of 0.1-1.0 mg/mL. We recommend to add 5-50% of glycerol (final concentration) and aliquot for long-term storage at -20°C/-80°C. Our default final concentration of glycerol is 50%. Customers could use it as reference.

Shelf Life

The shelf life is related to many factors, storage state, buffer ingredients, storage temperature and the stability of the protein itself. Generally, the shelf life of liquid form is 6 months at -20°C/-80°C. The shelf life of lyophilized form is 12 months at -20°C/-80°C.