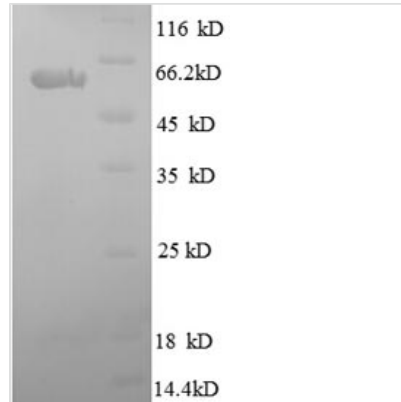




# Recombinant Human SPARC (SPARC)

<b>Product Code</b>	CSB-RP094444h
<b>Relevance</b>	Appears to regulate cell growth through interactions with the Extracellular domain matrix and cytokines. Binds calcium and copper, several types of collagen, albumin, thrombospondin, PDGF and cell mbranes. There are two calcium binding sites; an acidic domain that binds 5 to 8 Ca <sup>2+</sup> with a low affinity and an EF-hand loop that binds a Ca <sup>2+</sup> ion with a high affinity.
<b>Abbreviation</b>	Recombinant Human SPARC protein
<b>Storage</b>	The shelf life is related to many factors, storage state, buffer ingredients, storage temperature and the stability of the protein itself. Generally, the shelf life of liquid form is 6 months at -20°C/-80°C. The shelf life of lyophilized form is 12 months at -20°C/-80°C.
<b>Uniprot No.</b>	P09486
<b>Alias</b>	Basement-membrane protein 40 ;BM-40Osteonectin ;ONSecreted protein acidic and rich in cysteine
<b>Product Type</b>	Recombinant Protein
<b>Immunogen Species</b>	Homo sapiens (Human)
<b>Purity</b>	≥ 90% as determined by SDS-PAGE.
<b>Sequence</b>	APQQEALPDETEVVEETVAEVTEVSVGANPVQVEVGEFDDGAEETEEVVAE NPCQNHHCXHGKVCVCEL DENNTPMCVCQDPTSCPAPIGEFEKVCSDNKTFD SSCHFFATKCTLEGTKKGHKLHLDYIGPCKYIPCLDSELTEFPLMRDWLKNV LVTLYERDEDNLLTEKQKLRVKKIHENEKRLEAGDHPVELLARDFEKNYNMYI FPVHWQFGQLDQHPIDGYLSHTELAPLRAPLIPMEHCTTRFFETCDLNDKYIA LDEWAGCFGIKQKDKDLVI
<b>Research Area</b>	Cardiovascular
<b>Source</b>	E.coli
<b>Target Names</b>	SPARC
<b>Expression Region</b>	18-303aa
<b>Notes</b>	Repeated freezing and thawing is not recommended. Store working aliquots at 4°C for up to one week.
<b>Tag Info</b>	N-terminal GST-tagged
<b>Mol. Weight</b>	59.7kDa
<b>Protein Length</b>	Full Length of Mature Protein
<b>Image</b>	



(Tris-Glycine gel) Discontinuous SDS-PAGE (reduced) with 5% enrichment gel and 15% separation gel.

### Reconstitution

We recommend that this vial be briefly centrifuged prior to opening to bring the contents to the bottom. Please reconstitute protein in deionized sterile water to a concentration of 0.1-1.0 mg/mL. We recommend to add 5-50% of glycerol (final concentration) and aliquot for long-term storage at -20°C/-80°C. Our default final concentration of glycerol is 50%. Customers could use it as reference.

### Shelf Life

The shelf life is related to many factors, storage state, buffer ingredients, storage temperature and the stability of the protein itself. Generally, the shelf life of liquid form is 6 months at -20°C/-80°C. The shelf life of lyophilized form is 12 months at -20°C/-80°C.