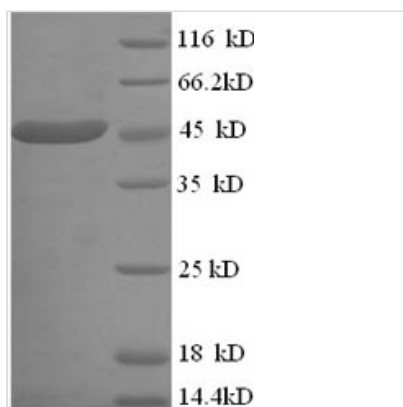




Recombinant Human Creatine kinase U-type, mitochondrial (CKMT1A)

Product Code	CSB-EP005460HU
Relevance	Reversibly catalyzes the transfer of phosphate between ATP and various phosphogens (e.g. creatine phosphate). Creatine kinase isoenzymes play a central role in energy transduction in tissues with large, fluctuating energy demands, such as skeletal muscle, heart, brain and spermatozoa.
Abbreviation	Recombinant Human CKMT1A protein
Storage	The shelf life is related to many factors, storage state, buffer ingredients, storage temperature and the stability of the protein itself. Generally, the shelf life of liquid form is 6 months at -20°C/-80°C. The shelf life of lyophilized form is 12 months at -20°C/-80°C.
Uniprot No.	P12532
Alias	Acidic-type mitochondrial creatine kinase ;Mia-CKUbiquitous mitochondrial creatine kinase ;U-MtCK
Product Type	Recombinant Protein
Immunogen Species	Homo sapiens (Human)
Purity	≥ 90% as determined by SDS-PAGE.
Sequence	ASERRRLYPPSAEYPLDRKHNNCMASHLTPAVYARLCDKTTPTGWTLDQCIQ TGVDNPGHPFIKTVGMVAGDEETYEVFADLFDPIQERHNGYDPRTMKHTTDL DASKIRSGYFDERYVLSSRVRTGRSIRGLSLPPACTRAERREVERVVVDALSG LKGDLAGRYRLSEMTEAEQQQLIDDHFLFDKPVSPLLTAAGMARDWPDARGI WHNNEKSFLIWVNEEDHTRVISMEEKGGNMKRVFERFCRGLKEVERLIQERGW EFMWNERLGYILTCPSNLGTGLRAGVHIKPLLSKDSRFPKILENLRLQKRGTG GVDTAATGGVFDISNLDRLGKSEVELVQLVIDGVNYLIDCERRLERGQDIRIPTP VIHTKH
Research Area	Signal Transduction
Source	E.coli
Target Names	CKMT1A
Expression Region	40-417aa
Notes	Repeated freezing and thawing is not recommended. Store working aliquots at 4°C for up to one week.
Tag Info	N-terminal 6xHis-tagged
Mol. Weight	47.1kDa
Protein Length	Full Length of Mature Protein
Image	



(Tris-Glycine gel) Discontinuous SDS-PAGE (reduced) with 5% enrichment gel and 15% separation gel.

Reconstitution

We recommend that this vial be briefly centrifuged prior to opening to bring the contents to the bottom. Please reconstitute protein in deionized sterile water to a concentration of 0.1-1.0 mg/mL. We recommend to add 5-50% of glycerol (final concentration) and aliquot for long-term storage at -20°C/-80°C. Our default final concentration of glycerol is 50%. Customers could use it as reference.

Shelf Life

The shelf life is related to many factors, storage state, buffer ingredients, storage temperature and the stability of the protein itself. Generally, the shelf life of liquid form is 6 months at -20°C/-80°C. The shelf life of lyophilized form is 12 months at -20°C/-80°C.