



Recombinant Human Angiopoietin-related protein 4 (ANGPTL4), partial

Product Code	CSB-EP866314HU1
Relevance	Protein with hypoxia-induced expression in endothelial cells. May act as a regulator of angiogenesis and modulate tumorigenesis. Inhibits proliferation, migration, and tubule formation of endothelial cells and reduces vascular leakage. May exert a protective function on endothelial cells through an endocrine action. It is directly involved in regulating glucose homeostasis, lipid metabolism, and insulin sensitivity. In response to hypoxia, the unprocessed form of the protein accumulates in the subendothelial Extracellular domain matrix (ECM). The matrix-associated and immobilized unprocessed form limits the formation of actin stress fibers and focal contacts in the adhering endothelial cells and inhibits their adhesion. It also decreases motility of endothelial cells and inhibits the sprouting and tube formation .
Abbreviation	Recombinant Human ANGPTL4 protein, partial
Storage	The shelf life is related to many factors, storage state, buffer ingredients, storage temperature and the stability of the protein itself. Generally, the shelf life of liquid form is 6 months at -20°C/-80°C. The shelf life of lyophilized form is 12 months at -20°C/-80°C.
Uniprot No.	Q9BY76
Alias	Angiopoietin-like protein 4Hepatic fibrinogen/angiopoietin-related protein ;HFARP
Product Type	Recombinant Protein
Immunogen Species	Homo sapiens (Human)
Purity	Greater than 90% as determined by SDS-PAGE.
Sequence	VQSKSPRFASWDEMNVLAHGLLQLGQGLREHAERTRSQLSALERRLSACGS ACQGTEGSTDPLAPESRVDPEVLHSLQTQLKAQNSRIQQLFHKVAQQQRHL EKQHLRIQHLQSQFGLLDHKHLDHEVAKPARRKRLPEMAQPVDPAHNVSRLH RLPRDCQELFQVGERQSGLFEIQPQGSPFLVNCKMTSDGGWTVIQRHHDG SVDFNRPWEAYKAGFGDPHGEFWLGLEKVHSITGDRNSRLAVQLRDWDGNA ELLQFSVHLGGEDTAYSLQLTAPVAGQLGATTVPPSGLSVPFSTWDQDHLR RDKNCAKSLSGGWVFGTCSHSNLNGQYFRSIPQQRQKLKKGIFWKTWRGRY YPLQATTMLIQPMAAE
Research Area	Cardiovascular
Source	E.coli
Target Names	ANGPTL4
Expression Region	28-403aa
Notes	Repeated freezing and thawing is not recommended. Store working aliquots at 4°C for up to one week.

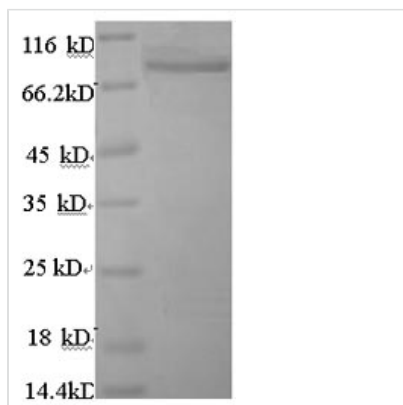


Tag Info N-terminal GST-tagged

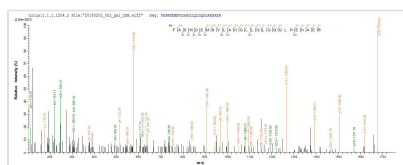
Mol. Weight 69.6kDa

Protein Length Partial

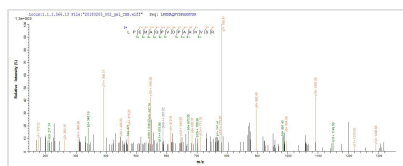
Image



(Tris-Glycine gel) Discontinuous SDS-PAGE (reduced) with 5% enrichment gel and 15% separation gel.



Based on the SEQUEST from database of E.coli host and target protein, the LC-MS/MS Analysis result of CSB-RP101444h could indicate that this peptide derived from E.coli-expressed Homo sapiens (Human) ANGPTL4.



Based on the SEQUEST from database of E.coli host and target protein, the LC-MS/MS Analysis result of CSB-RP101444h could indicate that this peptide derived from E.coli-expressed Homo sapiens (Human) ANGPTL4.

Reconstitution

We recommend that this vial be briefly centrifuged prior to opening to bring the contents to the bottom. Please reconstitute protein in deionized sterile water to a concentration of 0.1-1.0 mg/mL. We recommend to add 5-50% of glycerol (final concentration) and aliquot for long-term storage at -20°C/-80°C. Our default final concentration of glycerol is 50%. Customers could use it as reference.

Shelf Life

The shelf life is related to many factors, storage state, buffer ingredients, storage temperature and the stability of the protein itself. Generally, the shelf life of liquid form is 6 months at -20°C/-80°C. The shelf life of lyophilized form is 12 months at -20°C/-80°C.