



# Recombinant Human Cell surface glycoprotein MUC18 (MCAM), partial

<b>Product Code</b>	CSB-RP104394h
<b>Relevance</b>	Plays a role in cell adhesion, and in cohesion of the endothelial monolayer at intercellular junctions in vascular tissue. Its expression may allow melanoma cells to interact with cellular elements of the vascular system, thereby enhancing heterogeneous tumor spread. Could be an adhesion molecule active in neural crest cells during embryonic development. Acts as surface receptor that triggers tyrosine phosphorylation of FYN and PTK2/FAK1, and a transient increase in the intracellular calcium concentration.
<b>Abbreviation</b>	Recombinant Human MCAM protein, partial
<b>Storage</b>	The shelf life is related to many factors, storage state, buffer ingredients, storage temperature and the stability of the protein itself. Generally, the shelf life of liquid form is 6 months at -20°C/-80°C. The shelf life of lyophilized form is 12 months at -20°C/-80°C.
<b>Uniprot No.</b>	P43121
<b>Alias</b>	Cell surface glycoprotein P1H12Melanoma cell adhesion molecule;Melanoma-associated antigen A32Melanoma-associated antigen MUC18S-endo 1 endothelial-associated antigen; CD146
<b>Product Type</b>	Recombinant Protein
<b>Immunogen Species</b>	Homo sapiens (Human)
<b>Purity</b>	Greater than 90% as determined by SDS-PAGE.
<b>Sequence</b>	LSQSQGNLSHVDWFSVHKEKRTLIFRVRQGGQSQSEPGEYEQRLSLQDRGATL ALTQVTPQDERIFLCQGKRPRSQEYRIQLRVYKAPEEPNIQVNPLGIPVNSKEP EEVATCVGRNGYPIPQVIWYKNGRPLKEEKNRVHIQSSQTVESGLYTLQSILK AQLVKEDKDAQFYCELNYRLPSGNHMKESREVTVPVFYPTKVVLEVEPVGM LKEGDRVEIRCLADGNPPPHFSISKQNPSTREAAEETTNDNGVLVLEPARKEH SGRYECQGLDLDTMISLLSEPQELLVNYVSDVRVSPAAPERQEGSSLTLTCEA ESSQDLEFQWLREETGQVLERGPVLQLHDLKREAGGGYRCVASVPSIPGLNR TQLVNVAIFGPPWMAFKERKVVVKENMVLNLSCEASGHRPTISWNVNGTAS EQDQDPQRVLSTLNLVLTPELLETGVECTASNDLGKNTSILFLELVNLTTLTPD SNTTGLSTSTASPHTRANSTSTERKLPEPESRGVVIVAVIVCILVLAVLGAVLY FLYKKGKLCRRSGKQEITLPPSRKSELVVEVKSDKLPEEMGLLQGSSGDKRA PGDQGEKYIDLRH
<b>Research Area</b>	Cell Adhesion
<b>Source</b>	E.coli
<b>Target Names</b>	MCAM
<b>Expression Region</b>	50-646aa
<b>Notes</b>	Repeated freezing and thawing is not recommended. Store working aliquots at



4°C for up to one week.

**Tag Info**

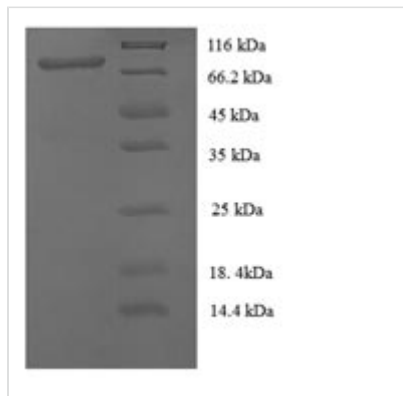
N-terminal 6xHis-tagged

**Mol. Weight**

70.7kDa

**Protein Length**

Partial

**Image**

(Tris-Glycine gel) Discontinuous SDS-PAGE (reduced) with 5% enrichment gel and 15% separation gel.

**Reconstitution**

We recommend that this vial be briefly centrifuged prior to opening to bring the contents to the bottom. Please reconstitute protein in deionized sterile water to a concentration of 0.1-1.0 mg/mL. We recommend to add 5-50% of glycerol (final concentration) and aliquot for long-term storage at -20°C/-80°C. Our default final concentration of glycerol is 50%. Customers could use it as reference.

**Shelf Life**

The shelf life is related to many factors, storage state, buffer ingredients, storage temperature and the stability of the protein itself. Generally, the shelf life of liquid form is 6 months at -20°C/-80°C. The shelf life of lyophilized form is 12 months at -20°C/-80°C.