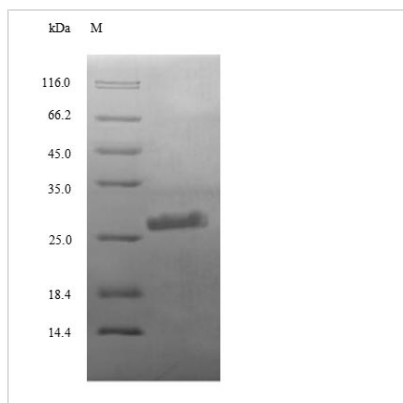


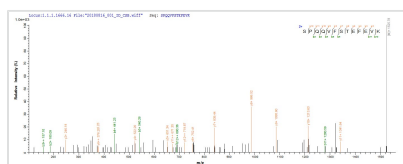


Recombinant Human Complement C3 (C3), partial

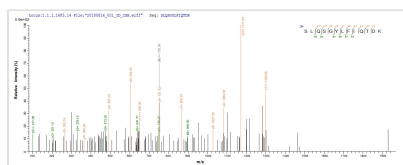
Product Code	CSB-EP355590HU
Relevance	C3 plays a central role in the activation of the complement system. Its processing by C3 convertase is the central reaction in both classical and alternative complement pathways. After activation C3b can bind covalently, via its reactive thioester, to cell surface carbohydrates or immune aggregates. Derived from proteolytic degradation of complement C3, C3a anaphylatoxin is a mediator of local inflammatory process. In chronic inflammation, acts as a chemoattractant for neutrophils. It induces the contraction of smooth muscle, increases vascular permeability and causes histamine release from mast cells and basophilic leukocytes. C3-beta-c: Acts as a chemoattractant for neutrophils in chronic inflammation. Acylation stimulating protein: adipogenic hormone that stimulates triglyceride (TG) synthesis and glucose transport in adipocytes, regulating fat storage and playing a role in postprandial TG clearance. Appears to stimulate TG synthesis via activation of the PLC, MAPK and AKT signaling pathways. Ligand for C5AR2. Promotes the phosphorylation, ARRB2-mediated internalization and recycling of C5AR2
Abbreviation	Recombinant Human C3 protein, partial
Storage	The shelf life is related to many factors, storage state, buffer ingredients, storage temperature and the stability of the protein itself. Generally, the shelf life of liquid form is 6 months at -20°C/-80°C. The shelf life of lyophilized form is 12 months at -20°C/-80°C.
Uniprot No.	P01024
Alias	C3 and PZP-like alpha-2-macroglobulin domain-containing protein 1
Product Type	Recombinant Protein
Immunogen Species	Homo sapiens (Human)
Purity	Greater than 90% as determined by SDS-PAGE.
Sequence	YSIITPNILRLESEETMVLEAHDAQGDVPVTVVHDFPGKKLVLSSEKTVLTPAT NHMGNVFTTIPANREFKSEKGRNKFVTVQATFGTQVVEKVVLVSLQSGYLFIQ TDKIYTPGSTVLYRIFTVNHKLLPVGRVVMVNIENPEGIPVKQDSLSSQNQLG VLPLSWDIPELVNMGQWKIRAYYENSPQQVFSTEFEVK
Research Area	Immunology
Source	E.coli
Target Names	C3
Expression Region	26-225aa
Notes	Repeated freezing and thawing is not recommended. Store working aliquots at 4°C for up to one week.
Tag Info	N-terminal 6xHis-tagged
Mol. Weight	26.4kDa


Protein Length
Partial
Image


(Tris-Glycine gel) Discontinuous SDS-PAGE (reduced) with 5% enrichment gel and 15% separation gel.



Based on the SEQUEST from database of E.coli host and target protein, the LC-MS/MS Analysis result of CSB-RP105994h could indicate that this peptide derived from E.coli-expressed Homo sapiens (Human) C3.



Based on the SEQUEST from database of E.coli host and target protein, the LC-MS/MS Analysis result of CSB-RP105994h could indicate that this peptide derived from E.coli-expressed Homo sapiens (Human) C3.

Reconstitution

We recommend that this vial be briefly centrifuged prior to opening to bring the contents to the bottom. Please reconstitute protein in deionized sterile water to a concentration of 0.1-1.0 mg/mL. We recommend to add 5-50% of glycerol (final concentration) and aliquot for long-term storage at -20°C/-80°C. Our default final concentration of glycerol is 50%. Customers could use it as reference.

Shelf Life

The shelf life is related to many factors, storage state, buffer ingredients, storage temperature and the stability of the protein itself. Generally, the shelf life of liquid form is 6 months at -20°C/-80°C. The shelf life of lyophilized form is 12 months at -20°C/-80°C.