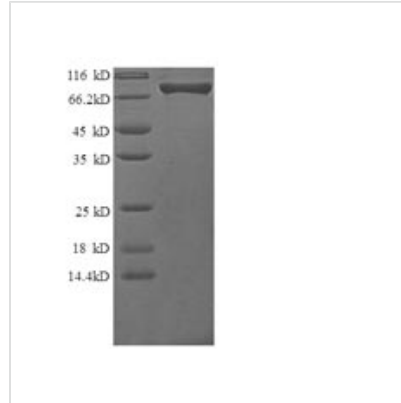




Recombinant Human Granulocyte colony-stimulating factor receptor (CSF3R), partial

Product Code	CSB-EP860321HU1
Relevance	Cytokine that stimulates the growth and differentiation of hatopoietic precursor cells from various lineages, including granulocytes, macrophages, eosinophils and erythrocytes.
Abbreviation	Recombinant Human CSF3R protein, partial
Storage	The shelf life is related to many factors, storage state, buffer ingredients, storage temperature and the stability of the protein itself. Generally, the shelf life of liquid form is 6 months at -20°C/-80°C. The shelf life of lyophilized form is 12 months at -20°C/-80°C.
Uniprot No.	Q99062
Product Type	Recombinant Proteins
Immunogen Species	Homo sapiens (Human)
Purity	≥ 90% as determined by SDS-PAGE.
Sequence	ECGHISVSAPIVHLGDPITASCIKQNCSHLDPEPQILWRLGAELQPGGRQQRL SDGTQESIITLPHLNHTQAFLSCCLNWSLQILDQVELRAGYPPAIPHNLSC MNLTTSSLICQWEPGPETHLPTSFTLKSFKSRGNCQTQGDSILDCVPGDGQSH CCIPRKHLLLYQNMGIWVQAENALGTSMSPLCLDPM DVVKLEPPMLRTMDP SPEAAPPQAGCLQLCWEPWQPGLHINQKCELRHKPQRGEASWALVGPLPLE ALQYELCGLLPATAYTLQIRCIRWPLPGHWSWSPSLELRTERAPT VRLDTW WRQRQLDPRTVQLFWKVPLEEDSGRIQGYVVSWRPSGQAGAILPLCNTE SCTFHLPSEAQVALVAYNSAGTSRPTPVVFSESRGPALTRLHAMARDPHSL WVGWEPPNPWPQGYVIEWGLGPPSASNSNKTWRMEQNGRATGFLLENIR PFQLYEIIVTPLYQDTMGPSQHVVAYSQEMAPSHAPELHLKHIGKTWAQLEWV PEPPELGKSPLTHYTIFWTNAQNSFSAILNASSRGRFVLHGLEPASLYHIHLMA ASQAGATNSTVLTLMTLT
Research Area	Cancer
Source	E.coli
Target Names	CSF3R
Expression Region	25-620aa
Notes	Repeated freezing and thawing is not recommended. Store working aliquots at 4°C for up to one week.
Tag Info	N-terminal GST-tagged
Mol. Weight	93.5kDa
Protein Length	Extracellular Domain
Image	



(Tris-Glycine gel) Discontinuous SDS-PAGE (reduced) with 5% enrichment gel and 15% separation gel.

Shelf Life

The shelf life is related to many factors, storage state, buffer ingredients, storage temperature and the stability of the protein itself.

Generally, the shelf life of liquid form is 6 months at -20°C/-80°C. The shelf life of lyophilized form is 12 months at -20°C/-80°C.