



Recombinant Human Phosphatidylcholine-sterol acyltransferase (LCAT), partial

Product Code	CSB-RP113694h
Relevance	Central enzyme in the Extracellular domain metabolism of plasma lipoproteins. Synthesized mainly in the liver and secreted into plasma where it converts cholesterol and phosphatidylcholines (lecithins) to cholesteryl esters and lysophosphatidylcholines on the surface of high and low density lipoproteins (HDLs and LDLs). The cholesterol ester is then transported back to the liver. Has a preference for plasma 16:0-18:2 or 18:0-18:2 phosphatidylcholines. Also produced in the brain by primary astrocytes, and esterifies free cholesterol on nascent APOE-containing lipoproteins secreted from glia and influences cerebral spinal fluid (CSF) APOE- and APOA1 levels. Together with APOE and the cholesterol transporter ABCA1, plays a key role in the maturation of glial-derived, nascent lipoproteins. Required for remodeling high-density lipoprotein particles into their spherical forms.
Abbreviation	Recombinant Human LCAT protein, partial
Storage	The shelf life is related to many factors, storage state, buffer ingredients, storage temperature and the stability of the protein itself. Generally, the shelf life of liquid form is 6 months at -20°C/-80°C. The shelf life of lyophilized form is 12 months at -20°C/-80°C.
Uniprot No.	P04180
Alias	Lecithin-cholesterol acyltransferase Phospholipid-cholesterol acyltransferase
Product Type	Recombinant Protein
Immunogen Species	Homo sapiens (Human)
Purity	Greater than 90% as determined by SDS-PAGE.
Sequence	FWLLNVLFPPHTTPKAELSNHTRPVILVPGCLGNQLEAKLDKPDVVNWMCYRK TEDFFTIWLDLNMFLPLGVDCWIDNTRVVYNRSSGLVSNAPGVQIRVPGFGKT YSVEYLDSSKLAGYLHTLVQNLVNNGYVRDETVRAAPYDWRLEPGQQEEYYR KLAGLVEEMHAAAYGKPVFLIGHSLGCLHLLYFLLRQPQAWKDRFIDGFISLGAP WGGSIKPMVLVLSGDNQGIPIMSSIKLKEEQRITTTSPWMFPSRMAWPEDHVI STPSFNVTGRDFQRFFADLHFEEGWYMWLQSRDLLAGLPAPGVEVYCLYGV GLPTPRTYIYDHGFPYTDVPVGVLYEDGDDTVATRSTELCGLWQGRQPQPVHL LPLHGIQHLNMVFSNLTLEHINAILLGAYRQGPASPTAS
Research Area	Metabolism
Source	E.coli
Target Names	LCAT
Expression Region	25-433aa
Notes	Repeated freezing and thawing is not recommended. Store working aliquots at 4°C for up to one week.

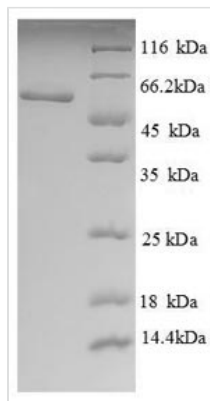


Tag Info N-terminal 6xHis-tagged

Mol. Weight 50.3kDa

Protein Length Partial

Image



(Tris-Glycine gel) Discontinuous SDS-PAGE (reduced) with 5% enrichment gel and 15% separation gel.

Reconstitution

We recommend that this vial be briefly centrifuged prior to opening to bring the contents to the bottom. Please reconstitute protein in deionized sterile water to a concentration of 0.1-1.0 mg/mL. We recommend to add 5-50% of glycerol (final concentration) and aliquot for long-term storage at -20°C/-80°C. Our default final concentration of glycerol is 50%. Customers could use it as reference.

Shelf Life

The shelf life is related to many factors, storage state, buffer ingredients, storage temperature and the stability of the protein itself. Generally, the shelf life of liquid form is 6 months at -20°C/-80°C. The shelf life of lyophilized form is 12 months at -20°C/-80°C.