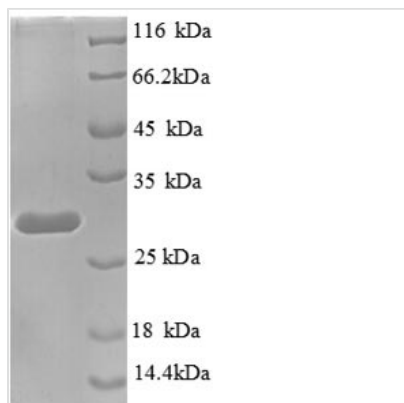




# Recombinant Human Transcription termination factor 1 (TTF1), partial

<b>Product Code</b>	CSB-EP622994HU
<b>Relevance</b>	Multifunctional nucleolar protein that terminates ribosomal gene transcription, mediates replication fork arrest and regulates RNA polymerase I transcription on chromatin. Plays a dual role in rDNA regulation, being involved in both activation and silencing of rDNA transcription. Interaction with BAZ2A/TIP5 recovers DNA-binding activity.
<b>Abbreviation</b>	Recombinant Human TTF1 protein, partial
<b>Storage</b>	The shelf life is related to many factors, storage state, buffer ingredients, storage temperature and the stability of the protein itself. Generally, the shelf life of liquid form is 6 months at -20°C/-80°C. The shelf life of lyophilized form is 12 months at -20°C/-80°C.
<b>Uniprot No.</b>	Q15361
<b>Alias</b>	RNA polymerase I termination factor Transcription termination factor I ;TTF-I
<b>Product Type</b>	Recombinant Protein
<b>Immunogen Species</b>	Homo sapiens (Human)
<b>Purity</b>	≥ 90% as determined by SDS-PAGE.
<b>Sequence</b>	HTPVSDK K K K K C S I H K E R P Q K H S H E I F R D S S L V N E Q S Q I T R R K K R K K D F Q H L I S S P L K K S R I C D E T A N A T S T L K K R K K R R Y S A L E V D E E A G V T V V L V D K E N I N N T P K H F R K D V D V V C V D M S I E Q K L P R K P K T D K F Q V L A K S H A H K S E A L H S K V R E K K N K K H Q R K A A S W E S Q R A R D T L P Q S E S H Q E E S W L S V G P G G E I T E L P A S A H K N K S K K K K K K S S N R E Y E T L A M P E G S Q A
<b>Research Area</b>	Transcription
<b>Source</b>	E.coli
<b>Target Names</b>	TTF1
<b>Expression Region</b>	11-242aa
<b>Notes</b>	Repeated freezing and thawing is not recommended. Store working aliquots at 4°C for up to one week.
<b>Tag Info</b>	N-terminal 6xHis-tagged
<b>Mol. Weight</b>	30.7kDa
<b>Protein Length</b>	Partial
<b>Image</b>	



(Tris-Glycine gel) Discontinuous SDS-PAGE (reduced) with 5% enrichment gel and 15% separation gel.

### Reconstitution

We recommend that this vial be briefly centrifuged prior to opening to bring the contents to the bottom. Please reconstitute protein in deionized sterile water to a concentration of 0.1-1.0 mg/mL. We recommend to add 5-50% of glycerol (final concentration) and aliquot for long-term storage at -20°C/-80°C. Our default final concentration of glycerol is 50%. Customers could use it as reference.

### Shelf Life

The shelf life is related to many factors, storage state, buffer ingredients, storage temperature and the stability of the protein itself. Generally, the shelf life of liquid form is 6 months at -20°C/-80°C. The shelf life of lyophilized form is 12 months at -20°C/-80°C.