



Recombinant Human Basigin (BSG), partial

Product Code CSB-EP002831HU2

Relevance

Plays an important role in targeting the monocarboxylate transporters SLC16A1, SLC16A3 and SLC16A8 to the plasma mbrane. Plays pivotal roles in spermatogenesis, bryo implantation, neural network formation and tumor progression. Stimulates adjacent fibroblasts to produce matrix metalloproteinases (MMPS). Ses to be a receptor for oligomannosidic glycans. In vitro, promotes outgrowth of astrocytic processes.

Abbreviation Recombinant Human BSG protein, partial

Storage The shelf life is related to many factors, storage state, buffer ingredients, storage temperature and the stability of the protein itself. Generally, the shelf life of liquid form is 6 months at -20°C/-80°C. The shelf life of lyophilized form is 12 months at -20°C/-80°C.

Uniprot No. P35613

Alias 5F7Collagenase stimulatory factor; Extracellular domain matrix metalloproteinase inducer ;EMMPRIN; Leukocyte activation antigen M6OK blood group antigen; Tumor cell-derived collagenase stimulatory factor ;TCSF; CD147

Product Type Recombinant Protein

Immunogen Species Homo sapiens (Human)

Purity Greater than 90% as determined by SDS-PAGE.

Sequence EPGTVFTTVEDLGSKILLTCSLNDSEVTGHRWLKGGVVLKEDALPGQKTEF
KVDSDDQWGEYSCVFLPEPMGTANIQLHGPPRVKAVKSSEHINEGETAMLVC
KSESVPPVTDWAWYKITDSEDKALMNGSESRRFFVSSSQGRSELHIENLNMEA
DPGQYRCNGTSSKGSQAIITLRVRS

Research Area Cancer

Source E.coli

Target Names BSG

Expression Region 138-321aa

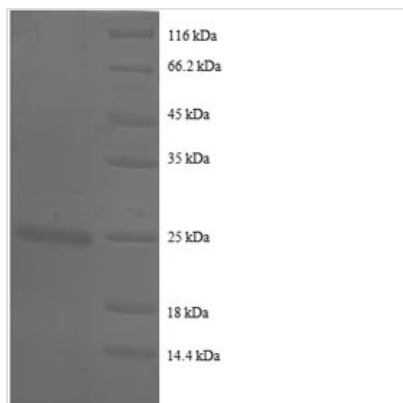
Notes Repeated freezing and thawing is not recommended. Store working aliquots at 4°C for up to one week.

Tag Info N-terminal 6xHis-tagged

Mol. Weight 24.2kDa

Protein Length Partial

Image



(Tris-Glycine gel) Discontinuous SDS-PAGE (reduced) with 5% enrichment gel and 15% separation gel.

Reconstitution

We recommend that this vial be briefly centrifuged prior to opening to bring the contents to the bottom. Please reconstitute protein in deionized sterile water to a concentration of 0.1-1.0 mg/mL. We recommend to add 5-50% of glycerol (final concentration) and aliquot for long-term storage at -20°C/-80°C. Our default final concentration of glycerol is 50%. Customers could use it as reference.

Shelf Life

The shelf life is related to many factors, storage state, buffer ingredients, storage temperature and the stability of the protein itself. Generally, the shelf life of liquid form is 6 months at -20°C/-80°C. The shelf life of lyophilized form is 12 months at -20°C/-80°C.