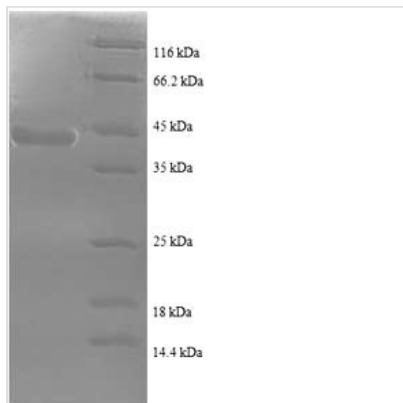


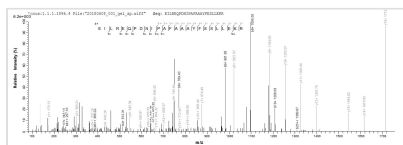


Recombinant Human Sperm surface protein Sp17 (SPA17), partial

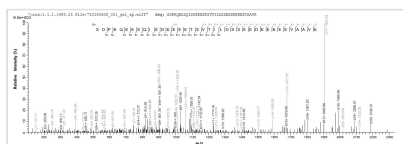
Product Code	CSB-EP614892HU1
Relevance	Sperm surface zona pellucida binding protein. Helps to bind spermatozoa to the zona pellucida with high affinity. Might function in binding zona pellucida and carbohydrates .
Abbreviation	Recombinant Human SPA17 protein, partial
Storage	The shelf life is related to many factors, storage state, buffer ingredients, storage temperature and the stability of the protein itself. Generally, the shelf life of liquid form is 6 months at -20°C/-80°C. The shelf life of lyophilized form is 12 months at -20°C/-80°C.
Uniprot No.	Q15506
Alias	Cancer/testis antigen 22 ;CT22Sp17-1Sperm autoantigenic protein 17 ;Sperm protein 17
Product Type	Recombinant Protein
Immunogen Species	Homo sapiens (Human)
Purity	Greater than 90% as determined by SDS-PAGE.
Sequence	MSIPFSNTHYRIPQGFGNLLEGLTREILREQPDNIPAFAAAYFESLLEKREKTNF DPAEWGSKVEDRFYNNHAFEEQEPPEKSDPKQEEESQISGKEEETSVTILDSSE EDKEKEEVAAVKIQAAFRGHIAREEAKKMKTNSLQNEE
Research Area	Cancer
Source	E.coli
Target Names	SPA17
Expression Region	1-146aa
Notes	Repeated freezing and thawing is not recommended. Store working aliquots at 4°C for up to one week.
Tag Info	N-terminal GST-tagged
Mol. Weight	43.8kDa
Protein Length	Partial
Image	



(Tris-Glycine gel) Discontinuous SDS-PAGE (reduced) with 5% enrichment gel and 15% separation gel.



Based on the SEQUEST from database of E.coli host and target protein, the LC-MS/MS Analysis result of CSB-RP121244h could indicate that this peptide derived from E.coli-expressed Homo sapiens (Human) SPA17.



Based on the SEQUEST from database of E.coli host and target protein, the LC-MS/MS Analysis result of CSB-RP121244h could indicate that this peptide derived from E.coli-expressed Homo sapiens (Human) SPA17.

Reconstitution

We recommend that this vial be briefly centrifuged prior to opening to bring the contents to the bottom. Please reconstitute protein in deionized sterile water to a concentration of 0.1-1.0 mg/mL. We recommend to add 5-50% of glycerol (final concentration) and aliquot for long-term storage at -20°C/-80°C. Our default final concentration of glycerol is 50%. Customers could use it as reference.

Shelf Life

The shelf life is related to many factors, storage state, buffer ingredients, storage temperature and the stability of the protein itself. Generally, the shelf life of liquid form is 6 months at -20°C/-80°C. The shelf life of lyophilized form is 12 months at -20°C/-80°C.