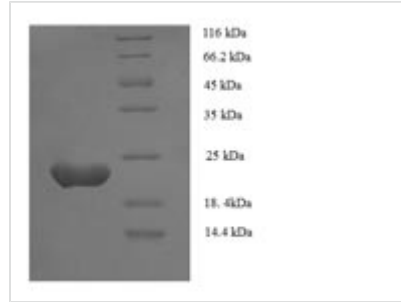




Recombinant Human Zinc finger protein GLI1 (GLI1), partial

Product Code	CSB-EP009499HU
Relevance	Acts as a transcriptional activator. May regulate the transcription of specific genes during normal development. May play a role in craniofacial development and digital development, as well as development of the central nervous system and gastrointestinal tract. Mediates SHH signaling and thus cell proliferation and differentiation.
Abbreviation	Recombinant Human GLI1 protein, partial
Storage	The shelf life is related to many factors, storage state, buffer ingredients, storage temperature and the stability of the protein itself. Generally, the shelf life of liquid form is 6 months at -20°C/-80°C. The shelf life of lyophilized form is 12 months at -20°C/-80°C.
Uniprot No.	P08151
Alias	Glioma-associated oncogeneOncogene GLI
Product Type	Recombinant Protein
Immunogen Species	Homo sapiens (Human)
Purity	Greater than 90% as determined by SDS-PAGE.
Sequence	QEPSYQSPKFLGGSQVSPSRAPVNTYGGPGFNP LNPNHKSGSYPTPSPCH ENFVVGANRASHRAAAPPRLLPPLPTCYGPLKVGGTNPSCGHPEVGRLLGGGP ALYPPPEGQVCNPLDSLDDNTQLDFVAILDEPQGLSPPPSHDQRGSSGHTPP PSGPPNMAVGNMSVLLRSLPGETEFLNSSA
Research Area	Developmental Biology
Source	E.coli
Target Names	GLI1
Expression Region	921-1106aa
Notes	Repeated freezing and thawing is not recommended. Store working aliquots at 4°C for up to one week.
Tag Info	N-terminal 6xHis-tagged
Mol. Weight	23.3kDa
Protein Length	Partial

Image



(Tris-Glycine gel) Discontinuous SDS-PAGE (reduced) with 5% enrichment gel and 15% separation gel.

Reconstitution

We recommend that this vial be briefly centrifuged prior to opening to bring the contents to the bottom. Please reconstitute protein in deionized sterile water to a concentration of 0.1-1.0 mg/mL. We recommend to add 5-50% of glycerol (final concentration) and aliquot for long-term storage at -20°C/-80°C. Our default final concentration of glycerol is 50%. Customers could use it as reference.

Shelf Life

The shelf life is related to many factors, storage state, buffer ingredients, storage temperature and the stability of the protein itself.

Generally, the shelf life of liquid form is 6 months at -20°C/-80°C. The shelf life of lyophilized form is 12 months at -20°C/-80°C.