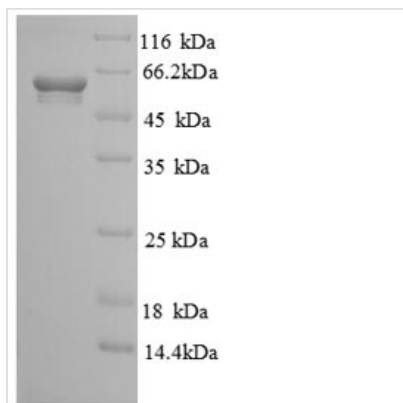


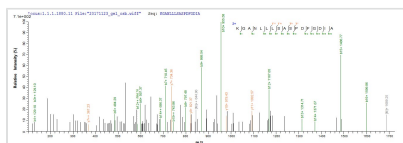


# Recombinant Human Soluble calcium-activated nucleotidase 1 (CANT1), partial

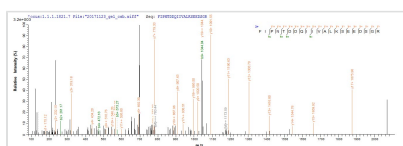
<b>Product Code</b>	CSB-EP848824HU
<b>Relevance</b>	Calcium-dependent nucleotidase with a preference for UDP. The order of activity with different substrates is UDP > GDP > UTP > GTP. Has very low activity towards ADP and even lower activity towards ATP. Does not hydrolyze AMP and GMP. Involved in proteoglycan synthesis.
<b>Abbreviation</b>	Recombinant Human CANT1 protein, partial
<b>Storage</b>	The shelf life is related to many factors, storage state, buffer ingredients, storage temperature and the stability of the protein itself. Generally, the shelf life of liquid form is 6 months at -20°C/-80°C. The shelf life of lyophilized form is 12 months at -20°C/-80°C.
<b>Uniprot No.</b>	Q8WVQ1
<b>Alias</b>	Apyrase homologPutative MAPK-activating protein PM09Putative NF-kappa-B-activating protein 107
<b>Product Type</b>	Recombinant Protein
<b>Immunogen Species</b>	Homo sapiens (Human)
<b>Purity</b>	≥ 90% as determined by SDS-PAGE.
<b>Sequence</b>	GQAPANWYNDTYPLSPQRTYPAGIRYRIAVIADLDTESRAQEENTWFSYLKKG YLTLSDSGDKVAVEWDKDHGVLESHLAEKGRGMELSDLIVFNGKLYSVDDRT GVVYQIEGSKAVPWVILSDGDGTVEKGFKAEWLAVKDERLYVGGGLKEWTTT TGDVVNENPEWVKVVG YKGSVDHENWVSNYNALRAAAGIQPPGYLIHESAC WSDTLQRWFFLPRRASQERYSEKDDERKGANLLLSASPDFGDIAVSHVGAVV PTHGFSSFKFIPNTDDQIIVALKSEEDSGRVASYIMAFTLDGRFLLPETKIGSVK YEG
<b>Source</b>	E.coli
<b>Target Names</b>	CANT1
<b>Expression Region</b>	80-397aa
<b>Notes</b>	Repeated freezing and thawing is not recommended. Store working aliquots at 4°C for up to one week.
<b>Tag Info</b>	N-terminal GST-tagged
<b>Mol. Weight</b>	62.4kDa
<b>Protein Length</b>	Partial
<b>Image</b>	



(Tris-Glycine gel) Discontinuous SDS-PAGE (reduced) with 5% enrichment gel and 15% separation gel.



Based on the SEQUEST from database of E.coli host and target protein, the LC-MS/MS Analysis result of CSB-RP130944h could indicate that this peptide derived from E.coli-expressed Homo sapiens (Human) CANT1.



Based on the SEQUEST from database of E.coli host and target protein, the LC-MS/MS Analysis result of CSB-RP130944h could indicate that this peptide derived from E.coli-expressed Homo sapiens (Human) CANT1.

## Reconstitution

We recommend that this vial be briefly centrifuged prior to opening to bring the contents to the bottom. Please reconstitute protein in deionized sterile water to a concentration of 0.1-1.0 mg/mL. We recommend to add 5-50% of glycerol (final concentration) and aliquot for long-term storage at -20°C/-80°C. Our default final concentration of glycerol is 50%. Customers could use it as reference.

## Shelf Life

The shelf life is related to many factors, storage state, buffer ingredients, storage temperature and the stability of the protein itself. Generally, the shelf life of liquid form is 6 months at -20°C/-80°C. The shelf life of lyophilized form is 12 months at -20°C/-80°C.