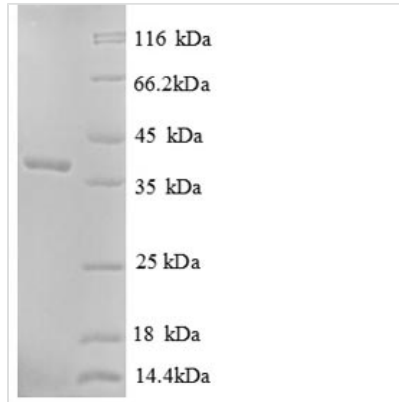




Recombinant Human Soluble calcium-activated nucleotidase 1 (CANT1), partial

Product Code	CSB-EP848824HUa0
Relevance	Calcium-dependent nucleotidase with a preference for UDP. The order of activity with different substrates is UDP > GDP > UTP > GTP. Has very low activity towards ADP and even lower activity towards ATP. Does not hydrolyze AMP and GMP. Involved in proteoglycan synthesis.
Abbreviation	Recombinant Human CANT1 protein, partial
Storage	The shelf life is related to many factors, storage state, buffer ingredients, storage temperature and the stability of the protein itself. Generally, the shelf life of liquid form is 6 months at -20°C/-80°C. The shelf life of lyophilized form is 12 months at -20°C/-80°C.
Uniprot No.	Q8WVQ1
Alias	Apyrase homologPutative MAPK-activating protein PM09Putative NF-kappa-B-activating protein 107
Product Type	Recombinant Protein
Immunogen Species	Homo sapiens (Human)
Purity	Greater than 90% as determined by SDS-PAGE.
Sequence	GQAPANWYNDTYPLSPPQRTPAGIRYRIAVIADLDTESRAQEENTWFSYLKKG YLTLSDSGDKVAVEWDKDHGVLESHLAEKGRGMELSDLIVFNGKLYSVDVRT GVVYQIEGSKAVPWVILSDGDGTVEKGFKAEWLAVKDERLYVGGGLGKEWTTT TGDVVNENPEWVKVVGKGSVDHENWVSNYNALRAAAGIQPPGYLIHESAC WSDTLQRWFFLPRRASQERYSEKDDERKGANLLLSASPDFGDIAVSHVGAVV PTHGFSSFKFIPNTDDQIIVALKSEEDSGRVASYIMAFTLDGRFLLPETKIGSVK YEG
Source	E.coli
Target Names	CANT1
Expression Region	80-397aa
Notes	Repeated freezing and thawing is not recommended. Store working aliquots at 4°C for up to one week.
Tag Info	N-terminal 6xHis-tagged
Mol. Weight	39.4kDa
Protein Length	Partial

Image



(Tris-Glycine gel) Discontinuous SDS-PAGE (reduced) with 5% enrichment gel and 15% separation gel.

Reconstitution

We recommend that this vial be briefly centrifuged prior to opening to bring the contents to the bottom. Please reconstitute protein in deionized sterile water to a concentration of 0.1-1.0 mg/mL. We recommend to add 5-50% of glycerol (final concentration) and aliquot for long-term storage at -20°C/-80°C. Our default final concentration of glycerol is 50%. Customers could use it as reference.

Shelf Life

The shelf life is related to many factors, storage state, buffer ingredients, storage temperature and the stability of the protein itself. Generally, the shelf life of liquid form is 6 months at -20°C/-80°C. The shelf life of lyophilized form is 12 months at -20°C/-80°C.