



Recombinant Human E3 ubiquitin-protein ligase MIB1 (MIB1), partial

Product Code	CSB-EP771476HU
Relevance	E3 ubiquitin-protein ligase that mediates ubiquitination of Delta receptors, which act as ligands of Notch proteins. Positively regulates the Delta-mediated Notch signaling by ubiquitinating the intracellular domain of Delta, leading to endocytosis of Delta receptors. Probably mediates ubiquitination and subsequent proteasomal degradation of DAPK1, thereby antagonizing anti-apoptotic effects of DAPK1 to promote TNF-induced apoptosis. Involved in ubiquitination of centriolar satellite CEP131, CEP290 and PCM1 proteins and hence inhibits primary cilium formation in proliferating cells. Mediates 'Lys-63'-linked polyubiquitination of TBK1, which probably participates in kinase activation. ¹ Publication
Abbreviation	Recombinant Human MIB1 protein, partial
Storage	The shelf life is related to many factors, storage state, buffer ingredients, storage temperature and the stability of the protein itself. Generally, the shelf life of liquid form is 6 months at -20°C/-80°C. The shelf life of lyophilized form is 12 months at -20°C/-80°C.
Uniprot No.	Q86YT6
Alias	DAPK-interacting protein 1 ;DIP-1Mind bomb homolog 1Zinc finger ZZ type with ankyrin repeat domain protein 2
Product Type	Recombinant Protein
Immunogen Species	Homo sapiens (Human)
Purity	≥ 90% as determined by SDS-PAGE.
Sequence	RNNRVMVEGVGARVVRGPDWKWKGKQDGGEGHVGTVRSFESPEEVVVVWD NGTAANYRCSGAYDLRILDSAPTGIKHDGTMCDTCRQQPIIGIRWKCAECTNY DLCTVCYHGDKHHLRHRFYRITTPGSERVLLSRRKSKKITARGIFAGARVVRG VDWQWEDQDGGNGRRGKVTEIQDWSASSPHSAAYVLWDNGAKNLYRVGFE GMSDLKCVQDAKGGSFYRDHCPVLGEQNGNRNPGGLQIGDLVNIDLLEIVQ SLQHGHHGGWTDGMFETLTTTGTVCGIDEDHDIVVQYPSGNRWTFNPAVLTKA NIVRSGDAAQGAEGGTSQ
Research Area	Signal Transduction
Source	E.coli
Target Names	MIB1
Expression Region	5-332aa
Notes	Repeated freezing and thawing is not recommended. Store working aliquots at 4°C for up to one week.

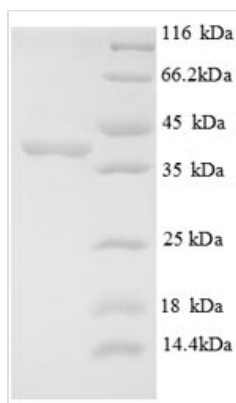


Tag Info N-terminal 6xHis-tagged

Mol. Weight 40.1kDa

Protein Length Partial

Image



(Tris-Glycine gel) Discontinuous SDS-PAGE (reduced) with 5% enrichment gel and 15% separation gel.

Reconstitution

We recommend that this vial be briefly centrifuged prior to opening to bring the contents to the bottom. Please reconstitute protein in deionized sterile water to a concentration of 0.1-1.0 mg/mL. We recommend to add 5-50% of glycerol (final concentration) and aliquot for long-term storage at -20°C/-80°C. Our default final concentration of glycerol is 50%. Customers could use it as reference.

Shelf Life

The shelf life is related to many factors, storage state, buffer ingredients, storage temperature and the stability of the protein itself. Generally, the shelf life of liquid form is 6 months at -20°C/-80°C. The shelf life of lyophilized form is 12 months at -20°C/-80°C.