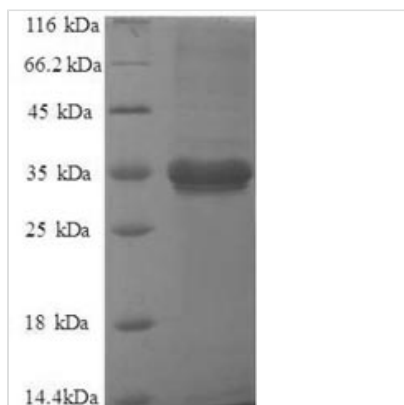




# Recombinant Human Metalloreductase STEAP1 (STEAP1), partial

<b>Product Code</b>	CSB-RP133544h
<b>Relevance</b>	Metalloreductase that has the ability to reduce both Fe <sup>3+</sup> to Fe <sup>2+</sup> and Cu <sup>2+</sup> to Cu <sup>1+</sup> . Uses NAD <sup>+</sup> as acceptor .
<b>Storage</b>	The shelf life is related to many factors, storage state, buffer ingredients, storage temperature and the stability of the protein itself. Generally, the shelf life of liquid form is 6 months at -20°C/-80°C. The shelf life of lyophilized form is 12 months at -20°C/-80°C.
<b>Uniprot No.</b>	Q9UHE8
<b>Product Type</b>	Recombinant Proteins
<b>Immunogen Species</b>	Homo sapiens (Human)
<b>Purity</b>	Greater than 90% as determined by SDS-PAGE.
<b>Sequence</b>	SRKDITNQEELWKMKPRRNLEEDDYLHKDTGETSMLKRPVLLHLHQTAHADE FDCPSELQHTQELFP
<b>Research Area</b>	Transport
<b>Source</b>	E.coli
<b>Target Names</b>	STEAP1
<b>Expression Region</b>	3-69aa
<b>Notes</b>	Repeated freezing and thawing is not recommended. Store working aliquots at 4°C for up to one week.
<b>Tag Info</b>	N-terminal GST-tagged
<b>Mol. Weight</b>	35.0kDa
<b>Protein Length</b>	Partial

## Image



(Tris-Glycine gel) Discontinuous SDS-PAGE (reduced) with 5% enrichment gel and 15% separation gel.

## Shelf Life

The shelf life is related to many factors, storage state, buffer ingredients, storage temperature and the stability of the protein itself.



Generally, the shelf life of liquid form is 6 months at -20°C/-80°C. The shelf life of lyophilized form is 12 months at -20°C/-80°C.