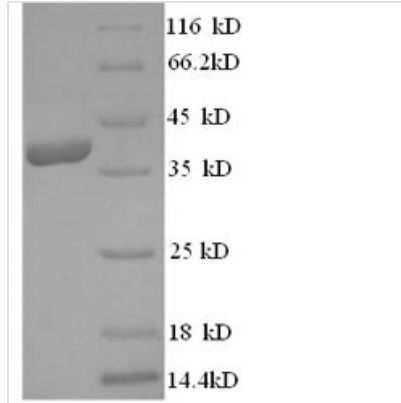


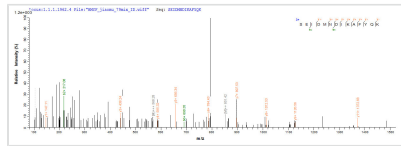


Recombinant Human Annexin A1 (ANXA1), partial

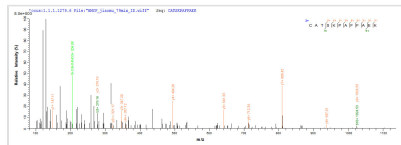
Product Code	CSB-EP001836HU1
Relevance	Calcium/phospholipid-binding protein which promotes mbrane fusion and is involved in exocytosis. This protein regulates phospholipase A2 activity. It ses to bind from two to four calcium ions with high affinity.
Abbreviation	Recombinant Human ANXA1 protein, partial
Storage	The shelf life is related to many factors, storage state, buffer ingredients, storage temperature and the stability of the protein itself. Generally, the shelf life of liquid form is 6 months at -20°C/-80°C. The shelf life of lyophilized form is 12 months at -20°C/-80°C.
Uniprot No.	P04083
Product Type	Recombinant Proteins
Immunogen Species	Homo sapiens (Human)
Purity	≥ 90% as determined by SDS-PAGE.
Sequence	SEFLKQAWFIENEEQEYVQTVKSSKGGPGSAVSPYPTFNPSSDVAALHKAIMV KGVDEATIIDILTKRNNQRQQIKAAYLQETGKPLDETLKALTGHLEEVVLLALL KTPAQFDADELRAAMKGLGTDEDTLIEILASRTNKEIRDINRVYREELKRD LAKD ITSDTSGDFRNALLSLAKGDRSEDFGVNEDLADSDARALYEAGERRKGT DVNV FNTILTTRSYPQLRRVFQKYTKYSKHD MNKVL DLELKGDI EKCLTAIVKCATSKP AFFAEK LHQAMKGVGTRHKALIRIMVSRSEIDMNDIKAFYQKMYGISLCQAILDE TKGDYEKILVALCGGN
Research Area	Signal Transduction
Source	E.coli
Target Names	ANXA1
Expression Region	5-346aa
Notes	Repeated freezing and thawing is not recommended. Store working aliquots at 4°C for up to one week.
Tag Info	N-terminal 6xHis-tagged
Mol. Weight	42.3kDa
Protein Length	Partial
Image	



(Tris-Glycine gel) Discontinuous SDS-PAGE (reduced) with 5% enrichment gel and 15% separation gel.



Based on the SEQUEST from database of E.coli host and target protein, the LC-MS/MS Analysis result of CSB-RP134574h could indicate that this peptide derived from E.coli-expressed Homo sapiens (Human) ANX1.



Based on the SEQUEST from database of E.coli host and target protein, the LC-MS/MS Analysis result of CSB-RP134574h could indicate that this peptide derived from E.coli-expressed Homo sapiens (Human) ANX1.

Shelf Life

The shelf life is related to many factors, storage state, buffer ingredients, storage temperature and the stability of the protein itself. Generally, the shelf life of liquid form is 6 months at -20°C/-80°C. The shelf life of lyophilized form is 12 months at -20°C/-80°C.