

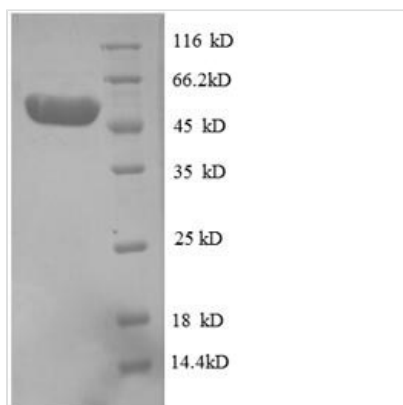


# Recombinant Human Proteasome activator complex subunit 3 (PSME3), partial

<b>Product Code</b>	CSB-EP018918HU1
<b>Relevance</b>	Subunit of the 11S REG-gamma (also called PA28-gamma) proteasome regulator, a doughnut-shaped homoheptamer which associates with the proteasome. 11S REG-gamma activates the trypsin-like catalytic subunit of the proteasome but inhibits the chymotrypsin-like and postglutamyl-preferring (PGPH) subunits. Facilitates the MDM2-p53/TP53 interaction which promotes ubiquitination- and MDM2-dependent proteasomal degradation of p53/TP53, limiting its accumulation and resulting in inhibited apoptosis after DNA damage. May also be involved in cell cycle regulation.
<b>Abbreviation</b>	Recombinant Human PSME3 protein, partial
<b>Storage</b>	The shelf life is related to many factors, storage state, buffer ingredients, storage temperature and the stability of the protein itself. Generally, the shelf life of liquid form is 6 months at -20°C/-80°C. The shelf life of lyophilized form is 12 months at -20°C/-80°C.
<b>Uniprot No.</b>	P61289
<b>Alias</b>	11S regulator complex subunit gamma ;REG-gammaActivator of multicatalytic protease subunit 3Ki nuclear autoantigen;Proteasome activator 28 subunit gamma ;PA28g ;PA28gamma
<b>Product Type</b>	Recombinant Protein
<b>Immunogen Species</b>	Homo sapiens (Human)
<b>Purity</b>	≥ 90% as determined by SDS-PAGE.
<b>Sequence</b>	ASLLKVDQEVKLVDSFRERITSEAEDLVANFFPKLLELDSFLKEPILNIHDLTQ IHSDMNLVVPDPILLTNSHDGLDGPTYKKRRLDECEEAFQGTKVFMVPMNGMLK SNQQLVDIIEKVKPEIRLLIEKCNTVKMWVQLLIPRIEDGNNFGVSIQEETVAELR TVESEAASYLDQISRYITRAKLVSKIAPHVEDYRRTVTEIDEKEYISLRLIISE LRNQYVTLHDMILKNIEKIKRPRSSNAET
<b>Research Area</b>	Apoptosis
<b>Source</b>	E.coli
<b>Target Names</b>	PSME3
<b>Expression Region</b>	2-252aa
<b>Notes</b>	Repeated freezing and thawing is not recommended. Store working aliquots at 4°C for up to one week.
<b>Tag Info</b>	N-terminal GST-tagged
<b>Mol. Weight</b>	56.1kDa
<b>Protein Length</b>	Partial



## Image



(Tris-Glycine gel) Discontinuous SDS-PAGE (reduced) with 5% enrichment gel and 15% separation gel.

## Reconstitution

We recommend that this vial be briefly centrifuged prior to opening to bring the contents to the bottom. Please reconstitute protein in deionized sterile water to a concentration of 0.1-1.0 mg/mL. We recommend to add 5-50% of glycerol (final concentration) and aliquot for long-term storage at -20°C/-80°C. Our default final concentration of glycerol is 50%. Customers could use it as reference.

## Shelf Life

The shelf life is related to many factors, storage state, buffer ingredients, storage temperature and the stability of the protein itself. Generally, the shelf life of liquid form is 6 months at -20°C/-80°C. The shelf life of lyophilized form is 12 months at -20°C/-80°C.